

STONE REAL ESTATE

1063-65 W. MADISON ST.

WEST LOOP STREET RETAIL



2,708
Square feet
available

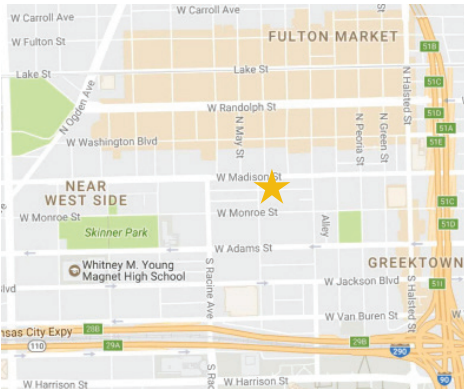


47K
Total population within a
one mile radius



23.5'
APPROX
W. Madison St. frontage

Highly Visible Retail at the SE Corner of W. Madison & Aberdeen



PROPERTY DESCRIPTION

Prominent corner location on bustling Madison Row at the base of a four-story condo building. Located two blocks south of McDonald's new headquarters, the subject property pulls both office workers and locals alike.

AVAILABLE SPACE

Lower Level: 2,708 sf

TRAFFIC COUNTS

12,400 vehicles per day on W. Madison St.

AREA RETAILERS



DEMOGRAPHICS

	1/2 MILE	1 MILE	2 MILE
POPULATION	12,913	47,302	233,271
AVERAGE HH INCOME	\$167,867	\$143,126	\$128,724
DAYTIME POPULATION	28,921	240,036	810,320



\$167K
Household income in a
half mile radius



240K
Daytime population in a
one mile radius



12.4K
Vehicles per day on
W. Madison St.

EXCLUSIVE AGENT

David Stone, Designated Managing Broker
312/372-2657 dstone@stonerealestate.com

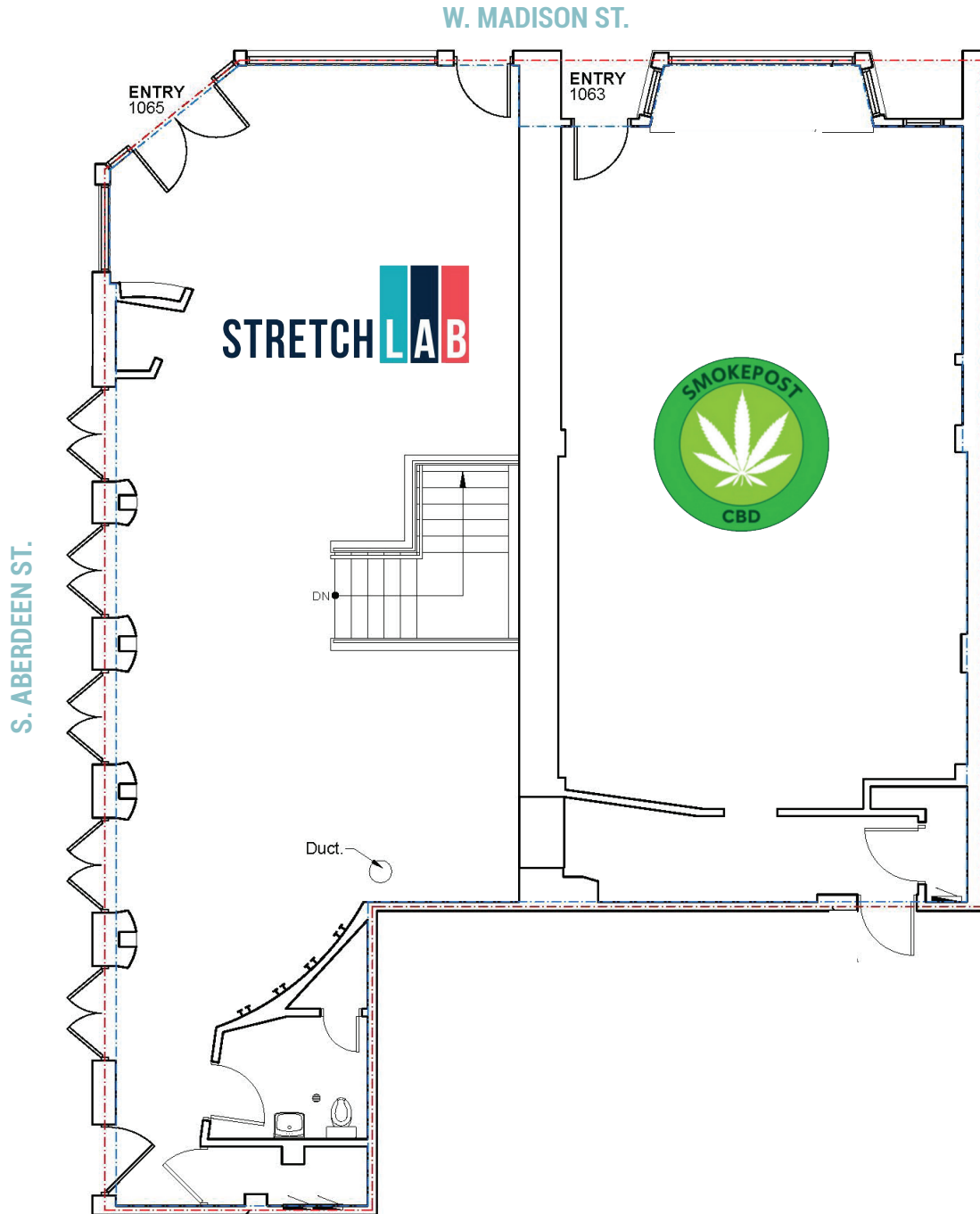
STONE
REAL ESTATE

STONE REAL ESTATE

1063-65 W. MADISON ST.

WEST LOOP STREET RETAIL

FIRST FLOOR PLAN



EXCLUSIVE AGENT

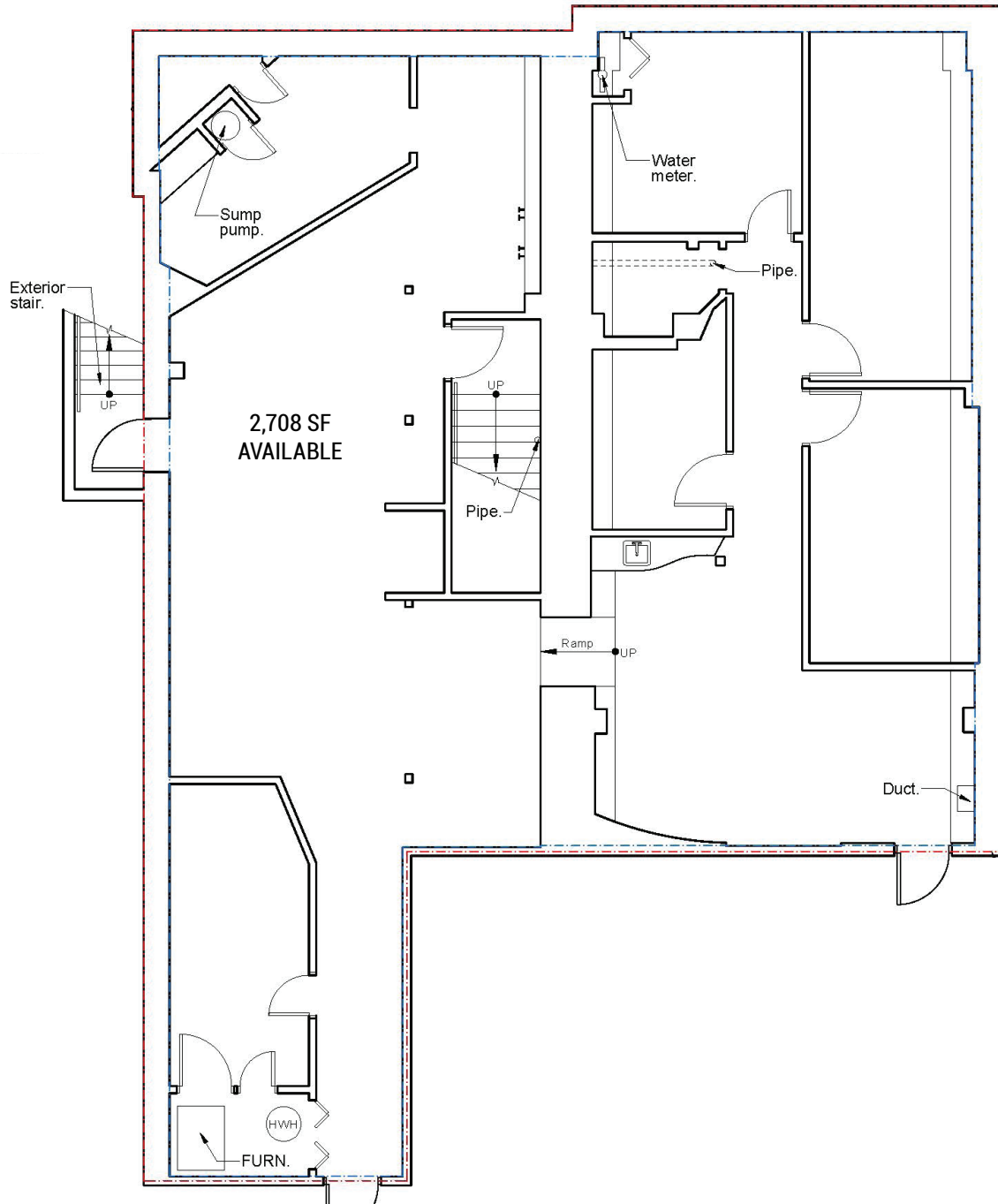
David Stone, Designated Managing Broker
312/372-2657 dstone@stonerealestate.com

STONE
REAL ESTATE

STONE REAL ESTATE

1063-65 W. MADISON ST. WEST LOOP STREET RETAIL

LOWER LEVEL FLOOR PLAN



EXCLUSIVE AGENT

David Stone, Designated Managing Broker
312/372-2657 dstone@stonerealestate.com

STONE
REAL ESTATE

1063-65 W. MADISON ST. WEST LOOP STREET RETAIL

MADISON ST. RETAIL MAP



EXCLUSIVE AGENT

David Stone, Designated Managing Broker
312/372-2657 dstone@stonerealestate.com

STONE
REAL ESTATE