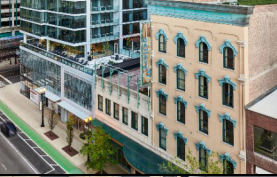







RETAIL/RESTAURANT FOR LEASE: URBAN THE LOOP





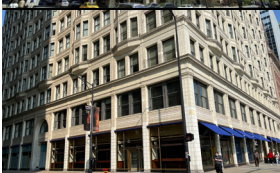
	ADDRESS/ BROKER(S)	AVAILABLE (RSF)	COMMENTS
	60 E. Randolph/ Parkline Tower <u>John Vance</u> <u>William Winter</u>	1,628 rsf 1,746 rsf	NEW LISTING Prime retail spaces located at the base of Parkline Tower (26 story, 213 luxury residential units) with prime availabilities fronting both Wabash and Randolph.
	120 N. LaSalle <u>William Winter</u> <u>David Stone</u>	4,740 rsf	Fully built out second generation restaurant space located at base of 40 story Class A office building in the heart of Chicago's financial district.
	137 S. State <u>John Vance</u> <u>William Winter</u>	9,000 rsf (divisible) (In Lease)	Hard corner of State Street and Adams. Join tenants Target, Primark, Nordstrom Rack, Uniqlo and JD Sports.
	17 N. State <u>John Vance</u> <u>David Stone</u>	LEASED! to Gap Factory Store	First and second level space available on State Street's best block. Two blocks from Millennium Park and proximate to all the main CTA subway lines. Space offers approximately 73' of frontage on State Street.
	30 N. LaSalle <u>William Winter</u> <u>John Vance</u>	3,497 rsf	Newly built out restaurant space fronting Washington available with black iron and patio at the base of an approximately 900,000 sf office building.
	33 N. Dearborn <u>William Winter</u> <u>John Vance</u>	2,111 rsf	Former café space fronting Washington Street. Located across the street from Daley Plaza, Block 37, Primark and Macy's. Area office tenants include JP Morgan Chase, Vivid Seats, Ferrero, Spot Freight and Havas.
	311 S. Wacker <u>John Vance</u>	886 rsf 1,124 rsf	Interior spaces for non-food user at the base of 1.3M SF Class A office building.
	Illinois Center/ Exterior Space <u>William Winter</u> <u>John Vance</u>	4,500 rsf	Massive outdoor plaza measuring approximately 10,000 sf available fronting Wacker Drive, The Chicago River and the Apple store.
	Illinois Center/ Concourse Space <u>William Winter</u> <u>John Vance</u>	1,105 rsf 2,136 rsf (corner)	Retail space at the base of these two 1M SF office buildings that bookend the Illinois Center, a five building, 4.6M SF office and retail complex. Recent upgrade and renovation of office, lobby and retail concourse completed, including the magnificent Chicago Architecture Foundation.

ADDRESS/
BROKER(S)



AVAILABLE
(RSF)

COMMENTS

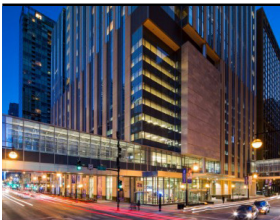
THE LOOP (CONT'D)

	One East Wacker <u>William Winter</u> <u>John Vance</u>	9,722 rsf (restaurant with patio) 5,181 rsf (corner)	Two spaces available with prominent frontage at iconic State & Wacker intersection which provides access to the Loop's office density and offers visibility to tourists and residential population.
	One South Dearborn <u>John Vance</u>	3,745 rsf LEASED!	Capture 115' of frontage onto Madison at the base of this 40-story 828,538 sf Class A office building with Sidley & Austin as the anchor tenant. Access from Madison Street and the building's main lobby.
	One South Wacker <u>John Vance</u> <u>William Winter</u>	5,200 rsf LEASED!	Restaurant space fronting Wacker Drive with outdoor seating. Landlord will deliver restaurant infrastructure, equipment and furniture for bar and sit down restaurant user.
	Palmer House <u>John Vance</u> <u>William Winter</u>	1,000 - 18,693 rsf	NEW LISTING True flagship opportunities presented in this high profile asset. Centrally located amongst State Street's excellent retail co-tenancy and strong neighborhood demographics.
	Railway Exchange Building 224 S. Michigan Avenue <u>William Winter</u> <u>David Stone</u>	4,559 rsf (divisible)	Corner space (divisible) in this landmark building across from Art Institute of Chicago. Restaurants welcome.


NORTH MICHIGAN AVENUE

	The Wrigley Building <u>John Vance</u> <u>David Stone</u>	North Tower: 3,832 rsf South Tower: 4,723 rsf	Located on the North Bank of the Chicago River, the two spaces have great visibility with direct access from Michigan Avenue in this icon of Chicago's architectural tradition. Seeking pop-up retailers.
	Water Tower Place <u>David Stone</u> <u>John Vance</u>	Please call.	NEW LISTING A Chicago landmark on the Mag Mile, Water Tower Place will be undergoing a dramatic renovation to restore its place as an essential shopping and dining hub for residents and tourists. Call for details.

STREETERVILLE

	Northwestern Memorial Hospital Campus <u>David Stone</u>	Please call.	Northwestern Memorial Hospital is a nationally ranked academic medical center located on Northwestern University's Chicago campus in Streeterville. It is the flagship campus for Northwestern Medicine and the primary teaching hospital for the Feinberg School of Medicine at Northwestern University.
--	--	--------------	---

OLD TOWN


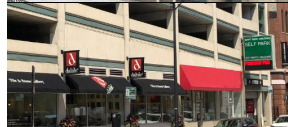



	1244 N. Wells <u>William Winter</u>	Ground Floor: 2,483 rsf Lower Level: 1,393 rsf Exterior Courtyard: 695 rsf	Truly unique retail destination offering a prime position in one of Chicago's most dynamic trade areas. The building is one of Chicago's oldest firehouses and comes with a private outdoor patio.
--	---	---	--

ADDRESS/
BROKER(S)

AVAILABLE
(RSF)

COMMENTS

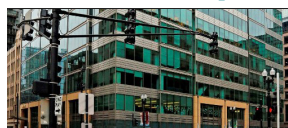



RIVER NORTH

	160 W. Kinzie John Vance David Stone	636 rsf	NEW LISTING Prime small shop space fronting Kinzie at the base of the Kinzie & Wells parking garage. Prime location across from THE MART.
	431 N. Orleans John Vance David Stone	2,055 rsf	Space located in the heart of the Design District between East Bank Club and THE MART.
	700 N. LaSalle John Vance Noah O'Neill	5,365 rsf (divisible)	FOR LEASE OR SALE Unique, single tenant, single story building surrounded by dense River North demos and high incomes at premier stoplight corner.
	One E. Erie William Winter John Vance	982 rsf (In Lease) 1,500 rsf (black iron) Panera Bread NOW OPEN!	Rarely available 2nd generation restaurant space in the heart of River North on State Street. Join Gordon Ramsay Burger, Sweetgreen, True Food Kitchen, Quartino and Barry's Bootcamp.
	THE MART John Vance David Stone	Second Floor: 851 rsf Legendary Spa NOW OPEN!	A River North icon, THE MART is home to a variety of retail shops, luxury kitchen and bath showrooms and a tremendous office roster that includes 1871 Tech Incubator, Motorola Mobility, Matter Health, Beam Suntory, Allstate and Grainger.

ILLINOIS MEDICAL DISTRICT (IMD)

	Rush University Medical Center David Stone	Ground Floor: +/- 900 rsf 1,150 rsf Starbucks NOW OPEN! 1,573 rsf (In Lease)	Located in the Illinois Medical District, the largest urban medical district in the country, which includes four world-class hospitals.
---	--	---	---

WEST LOOP/ FULTON MARKET

	550 W. Jackson Noah O'Neill David Stone	9,018 rsf (divisible)	Rarely available West Loop stoplight corner (Jackson & Clinton) with significant frontage and various flexible demising plans to meet tenant needs.
	500 W. Monroe John Vance	2,363 rsf (Seeking Café) 5,082 rsf	Small cafe space fronting Canal and larger black iron restaurant space fronting Monroe at the base of a 973,000 sf West Loop office tower. GE Capital and Motorola Solutions are anchor office tenants. Landlord open to façade modifications.
	MILIEU 205 S. Peoria William Winter John Vance	5,565 (divisible)	Available space fronting Peoria attracting customers from Fulton Market, Mary Bartelme Park, UIC campus and Greektown.
	Randolph & Peoria William Winter John Vance	2,951 rsf (2nd level)	NEW LISTING Highly visible 2nd floor retail space with direct access onto Randolph in Chicago's most dynamic neighborhood.

ADDRESS/
BROKER(S)

AVAILABLE
(RSF)

COMMENTS

BUCKTOWN/ WICKER PARK



1500 N. Damen
Ves Pavlovic
John Vance

3,521 rsf
2,421 rsf

NEW LISTING
Well-located center in the heart of Wicker Park, with wide storefronts and 38 surface parking spaces.



1520 N. Milwaukee Ave.
Ves Pavlovic
Noah O'Neill

3,062 rsf

Highly visible space in the heart of Wicker Park with a unique mix of national and local retailers. Walking distance from 2MM riders at Damen CTA stop.

LINCOLN PARK



904 W. Armitage
William Winter
John Vance

1,272 rsf **LEASED!**
to Catbird

Space available in the heart of boutique Chicago street offering an unparalleled co-tenancy mix.



2717 N. Clark
William Winter
Ves Pavlovic

5,000 rsf (divisible)

Prominent space located near the Clark & Diversey intersection, surrounded by high income households, dense residential population and public transportation.



The Belden-Stratford
William Winter
David Stone

1,725 rsf **LEASED!**

Small shop space in exclusive pocket of Lincoln Park with outsized frontage at the base of the historic Belden-Stratford. Direct access to residents in building.

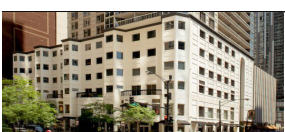


Triangle Square
Noah O'Neill
David Stone

2,400 - 21,500 rsf
19,826 sf land

FOR SALE OR LEASE
Proposed new construction retail building at the SEC (stoplight) of Elston & Webster. Drive thru capabilities and convenient parking. Ideal space for retail and/or medical users. Where Lincoln Park meets Bucktown.

GOLD COAST



One E. Delaware
Noah O'Neill

2,100 rsf
1,100 - 3,811 rsf
1,050 rsf

Easily accessible boutique building with premier Gold Coast address and available parking.

SOUTH LOOP



**730 S. Clark |
Burnham Pointe**
Noah O'Neill

2,160 rsf
Pure Green **OPEN!**
Club Pilates **OPEN!**

Second generation fitness studio/ small shop space available in 28-story high rise in Printer's Row which houses 298 apartments. Dense area demographics.

SOUTH SIDE



**Chatham Ridge
Shopping Center**
Noah O'Neill
Ves Pavlovic

1,800 rsf
13,847 rsf
Five Below **OPEN!**
2,605 rsf **LEASED!**
to Raising Canes

Dominant grocery anchored center ideally located at 87th & I-94 (Dan Ryan) full interchange which offers incredible visibility and tremendous traffic counts. Strong co-tenancy and surrounded by prominent retailers.



**Lake Meadows
Shopping Center**
Ves Pavlovic
Noah O'Neill

860 - 16,905 rsf

NEW LISTING
Rare urban junior anchor opportunity and small shop space available in Bronzeville neighborhood. Prominent stoplight corner with easy and convenient surface parking.



1717 W. Pershing
Noah O'Neill
John Vance
Ves Pavlovic

2,200 - 34,400 rsf

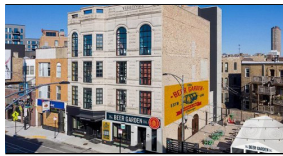
NEW LISTING
New large scale, mixed-use, urban campus redevelopment in McKinley Park approximately 4 miles southwest of Chicago.

ADDRESS/
BROKER(S)

AVAILABLE
(RSF)

COMMENTS

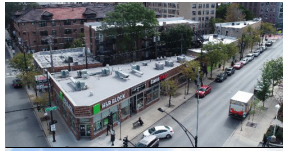
LAKEVIEW



3475 N. Clark
William Winter

LEASED! to Pilot
Project Brewing

Bi-level and fully built-out restaurant space with a large patio in the heart of Wrigleyville!



3951 N. Broadway
Ves Pavlovic
John Vance

1,206 rsf
1,689 rsf **LEASED!** to
Taco Maya!

NEW LISTING
Two entrances with high visibility and great signage opportunities located in a high density area with high volume CTA stops.

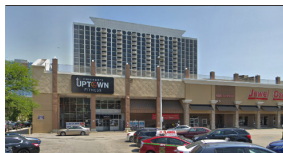


Lakeview Plaza
Ves Pavlovic

6,000 rsf (divisible)

NEW LISTING
Rarely available highly visible space with large surface parking lot and great signage opportunities in area with exceptional incomes and household density.

UPTOWN



The Montrose
Montrose & Broadway
Jason Gustaveson

11,425 rsf (1st floor/
divisible)
11,166 rsf
(2nd floor)

High visibility corner of grocery anchored shopping center. Prime corner location in newly renovated 287 unit Uptown apartment building. Adjacent to Jewel-Osco and surrounded by residential.

RETAIL/RESTAURANT FOR LEASE: SUBURBAN



704 Janes Ave.
Bolingbrook, IL
Jason Gustaveson
Ves Pavlovic

6,300 rsf/-
1.5 acres of land-
LEASED! to Pier 9
Seafood & Bar

Second generation restaurant with free-standing identity available across from Promenade Bolingbrook with easy access to I-355.



Bolingbrook Promenade
Bolingbrook, IL
Jason Gustaveson
Ves Pavlovic

815 - 30,000 rsf
14,000 rsf (In Lease)

Premier open-air lifestyle center with 73 national and local retailers with exceptional access via I-355 and I-55.



Metropolitan Square
Des Plaines, IL
Ves Pavlovic
Noah O'Neill

836 - 5,782 rsf
(divisible)

Space available in a grocery anchored shopping center with ample parking, adjacent to the Metra Station with high daytime and nighttime population counts.



Elk Crossing
Elk Grove Village, IL
Ves Pavlovic
Noah O'Neill

2,000 rsf
4,500 rsf
6,500 rsf
2,400 rsf **LEASED!**

Join well established and mature Jewel grocery store at highly trafficked stoplight intersection conveniently accessible to two major thoroughfares and adjacent to Ascension Illinois facility.



Village Crossing
Niles/Skokie, IL
Jason Gustaveson

875 - 37,089 rsf
1,586 rsf (former
restaurant)
6,214 rsf (former
restaurant)
889 rsf **LEASED!** to
Boost Mobile

Second generation restaurant space available. One of the best performing power centers in the Chicago metro area. With several dynamic traffic generators, the center draws from several well-educated affluent suburbs.

ADDRESS/
BROKER(S)

AVAILABLE
(RSF)

COMMENTS

RETAIL/RESTAURANT FOR LEASE: SUBURBAN (CONT'D)



**I-80 & Route 23
Ottawa, IL**
Jason Gustaveson

1 Acre Parcel

Property located directly off of the I-80 interchange, just 10 minutes east of Starved Rock State Park in a high growth community - average of 200 homes built/year.



**720 E. Dundee
Palatine, IL**
Jason Gustaveson
Ves Pavlovic

3,639 rsf

Former bank branch building with three drive-thru lanes and monument sign available at a signalized intersection. Across the street from national retailers and restaurants.



**Dundee & Rand
Palatine, IL**
Jason Gustaveson
Ves Pavlovic

1,645 rsf

Upscale strip with great tenant mix. Join Jimmy John's, Edible Arrangements, UPS and Massage Envy. Across the street from Target and Home Depot.

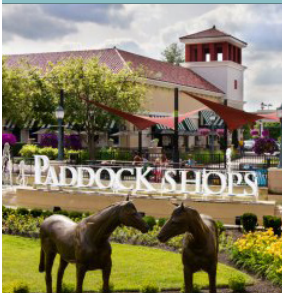


**Village Green SC
Park Ridge, IL**
Ves Pavlovic
Noah O'Neill

~~1,600~~ rsf **LEASED!** to
Mad P Hair Spa
2,440 rsf
2,742 rsf

Spaces available less than a mile from Downtown Park Ridge with excellent visibility from Northwest Highway and Busse Highway.

RETAIL/RESTAURANT FOR LEASE: NATIONAL



**Paddock Shops
Louisville, KY**
Jason Gustaveson
David Stone

900 rsf
2,576 rsf
2,820 rsf (former
restaurant)
7,000 rsf (In Lease)
REI NOW OPEN!
**Fresh Market NOW
OPEN!**

Paddock Shops is the only open air lifestyle center in Louisville. It offers 367,500 sf of retail and dining and is the premier shopping destination for northeastern Louisville and southern Indiana. Join co-tenants - Pottery Barn, West Elm, Barnes & Noble, Ulta, Athleta, Aeria, Jos A Bank, Malone's and more.



**3924 W. 50th Street
Edina, MN**
Jason Gustaveson

3,199 rsf

Space available, 50 yard line position in vibrant retail district with strong area co-tenancy and great visibility and branding from the street.



**Nolan Mains
Edina, MN**
Jason Gustaveson

1,549 - 4,914 rsf
Lululemon **NOW
OPEN!**

A six-story complex that includes 100 luxury apartments, street-level retail space and underground parking; all centered around a 5,000 sf public plaza. Join a unique mix of tenants - Billy Reid, Margaret O'Leary, Sweet Science, Mr. Paul's Supper Club, Brooke & Lou, Wild Ivy, Clean Juice, Faherty and Faribault and Prose.

ADDRESS/
BROKER(S)

AVAILABLE
(RSF)

COMMENTS

OFFICE/MEDICAL FOR LEASE: URBAN



4410 N. Ravenswood
Noah O'Neill

8,378 rsf (lower level)

Timber loft office building located in Ravenswood corridor with an exclusive building parking lot and walking distance to transportation and restaurants.



One E. Delaware
Noah O'Neill

2,100 rsf
1,100 - 3,811 rsf
1,050 rsf

Easily accessible boutique building with premier Gold Coast address and available parking.

INDUSTRIAL/FLEX FOR LEASE: URBAN



4222 N. Ravenswood
Noah O'Neill

+/- 1,729 rsf

Concrete loft flex building with high ceilings and mostly open floor plans. Easily accessible shared loading dock. Convenient onsite parking.

FOR SALE: URBAN

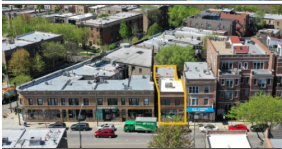


700 N. LaSalle
John Vance
Noah O'Neill

5,365 rsf (divisible)

FOR LEASE OR SALE

Unique, single tenant, single story building surrounded by dense River North demos and high incomes at premier stoplight corner.



3812 N. Clark Street
Noah O'Neill

3,224 rsf

FOR SALE

Highly sought after locations steps from Wrigley Field.

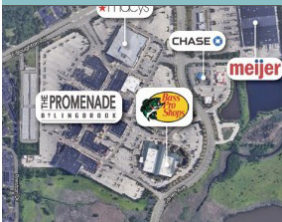


Triangle Square
Noah O'Neill

19,826 rsf of land

For sale or lease. Rarely available urban stoplight corner. Infill location where Lincoln Park meets Bucktown.

FOR SALE: SUBURBAN



Retail/ Medical/ Office Land
Bolingbrook, IL
Jason Gustaveson
Ves Pavlovic

Potential to build 60,000 sf building and parking

FOR SALE

One of a kind opportunity for destination entertainment or retail use near two major highways.

590' frontage on Janes, 500' on Falconridge
Zoned B-2 (Retail and Medical options)

FOR MORE INFORMATION PLEASE CONTACT EXCLUSIVE AGENTS:

JOHN VANCE

jvance@stonerealestate.com
312.782.1373

DAVID STONE

dstone@stonerealestate.com
312.372.2657

JASON GUSTAVESON

jason@stonerealestate.com
312.372.2688

WILLIAM WINTER

wwinter@stonerealestate.com
312.878.9445

NOAH O'NEILL

noah@stonerealestate.com
312.343.2683

VES PAVLOVIC

ves@stonerealestate.com
312.782.1374

STONE
REAL ESTATE