

STONE REAL ESTATE

1500 N. DAMEN AVE. | WICKER PARK



1.5K - 3.5K

Square feet available



54K

Daytime population in a 1.5 mile radius



\$181K

Average HH income in a one mile radius



58K

Households in a 1.5 mile radius



121K

People in a 1.5 mile radius

Retail Space with Surface Parking Available

PROPERTY DESCRIPTION

- Highly visible retail space in the heart of Chicago's Wicker Park neighborhood.
- Well-located center just a short distance from the Damen CTA which had over 1 million annual riders in 2023.
- Exceptionally wide spaces with frontages that measure +/- 50' for the 3,521 sf space and +/- 80' for the 2,421 sf space.
- Move in ready medical space ideal for tenant looking for second generation space.
- Surface parking lot with 38 shared parking spaces for customers and tenants.
- Surrounded by a dense and growing residential population steps away from one of Chicago's busiest intersections of North Ave., Damen Ave. and Milwaukee Ave.



AREA CO-TENANTS



DEMOGRAPHICS

	0.5 MILE	1 MILE	1.5 MILE
POPULATION	18,436	69,576	121,200
HOUSEHOLDS	9,280	34,278	58,815
AVERAGE HH INCOME	\$221,242	\$181,095	\$179,200
DAYTIME POPULATION	7,765	23,761	54,650

EXCLUSIVE AGENTS

John Vance 312/782-1373
jvance@stonerealestate.com

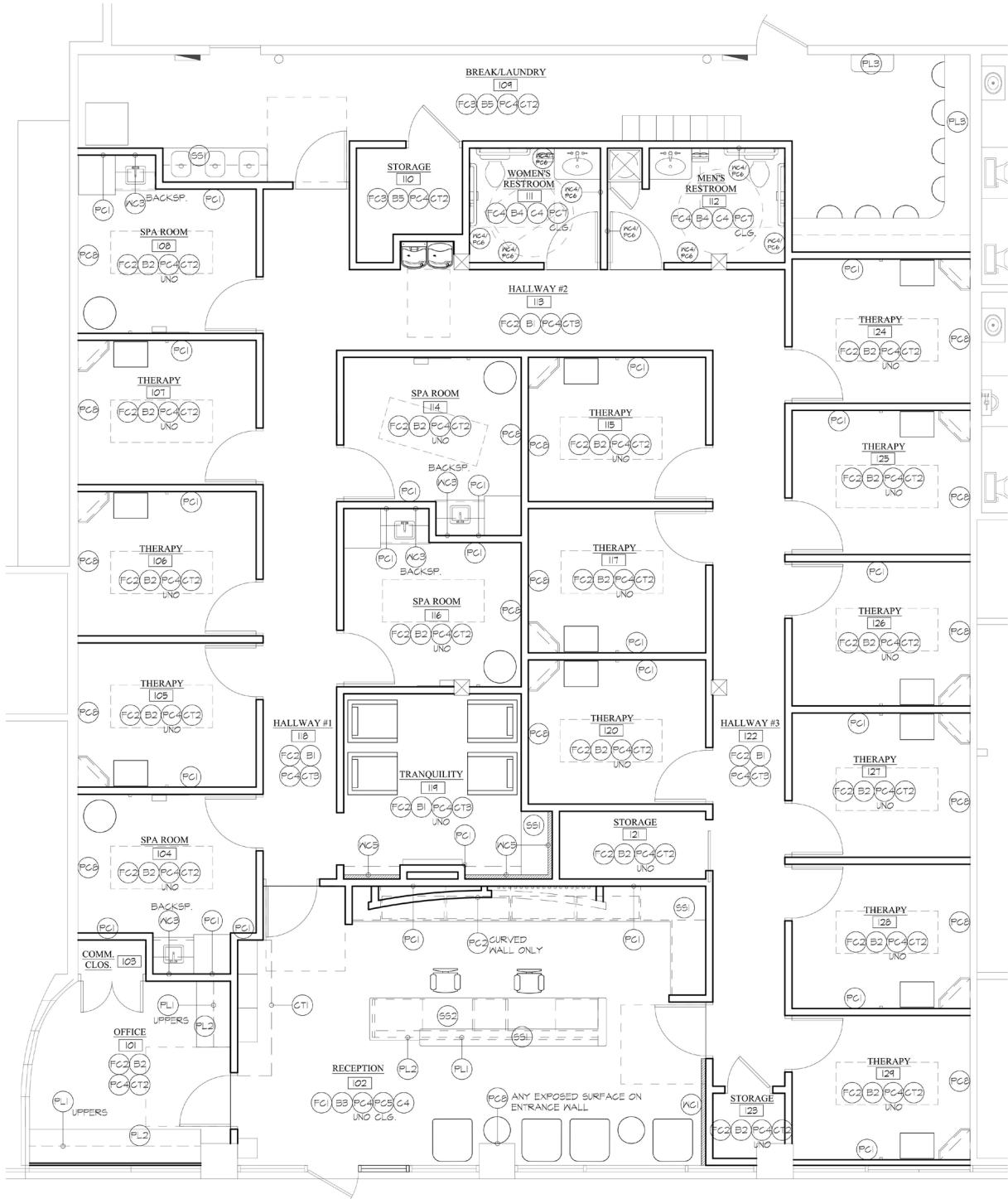
Ves Pavlovic 312/782-1374
ves@stonerealestate.com

STONE
REAL ESTATE

This information is from sources we deem to be reliable, however nothing contained herein should be construed as a representation on our part, as no independent verification of the information has been made by us.



UNIT 1520 FLOOR PLAN



EXCLUSIVE AGENTS

John Vance 312/782-1373
jvance@stonerealestate.com

Ves Pavlovic 312/782-1374
ves@stonerealestate.com

STONE
REAL ESTATE

