

# 3452 NORTH SOUTHPORT



**1,792**  
Square feet available



**18'**  
Southport Street frontage



**249K**  
Households in a three mile radius



**\$193K**  
Household income in a one mile radius



**489K**  
Total population in a three mile radius



**651.5K**  
2023 Southport Brown Line Station entries

## Vuori, Arc'Teryx, Buck Mason and hopefully YOU



### PROPERTY DESCRIPTION

Ideally located along the best block of Chicago's quintessential boutique street, 3452 N. Southport presents retailers with an exceptional branding opportunity. Situated within A+ co-tenancy and close to Southport's "L" station, small shop space has finally become available. With such strong demographics surrounding the trade area, no wonder that the existing Southport retailers generate strong sales volumes.

### AREA RETAILERS AND ATTRACTIONS

WARBY PARKER



BONOBOS

ANTHROPOLOGIE

ATHLETA



BUCK MASON



CROSBY'S KITCHEN



### DEMOGRAPHICS

	1 MILE	2 MILE	3 MILE
POPULATION	79,148	261,749	489,397
AVG HH INCOME	\$193,557	\$162,963	\$155,175
DAYTIME POP	28,487	84,892	145,633



SEPHORA

LUSH



KENDRA SCOTT

### EXCLUSIVE AGENTS

**William Winter** 312/878-9445  
wwinter@stonerealestate.com

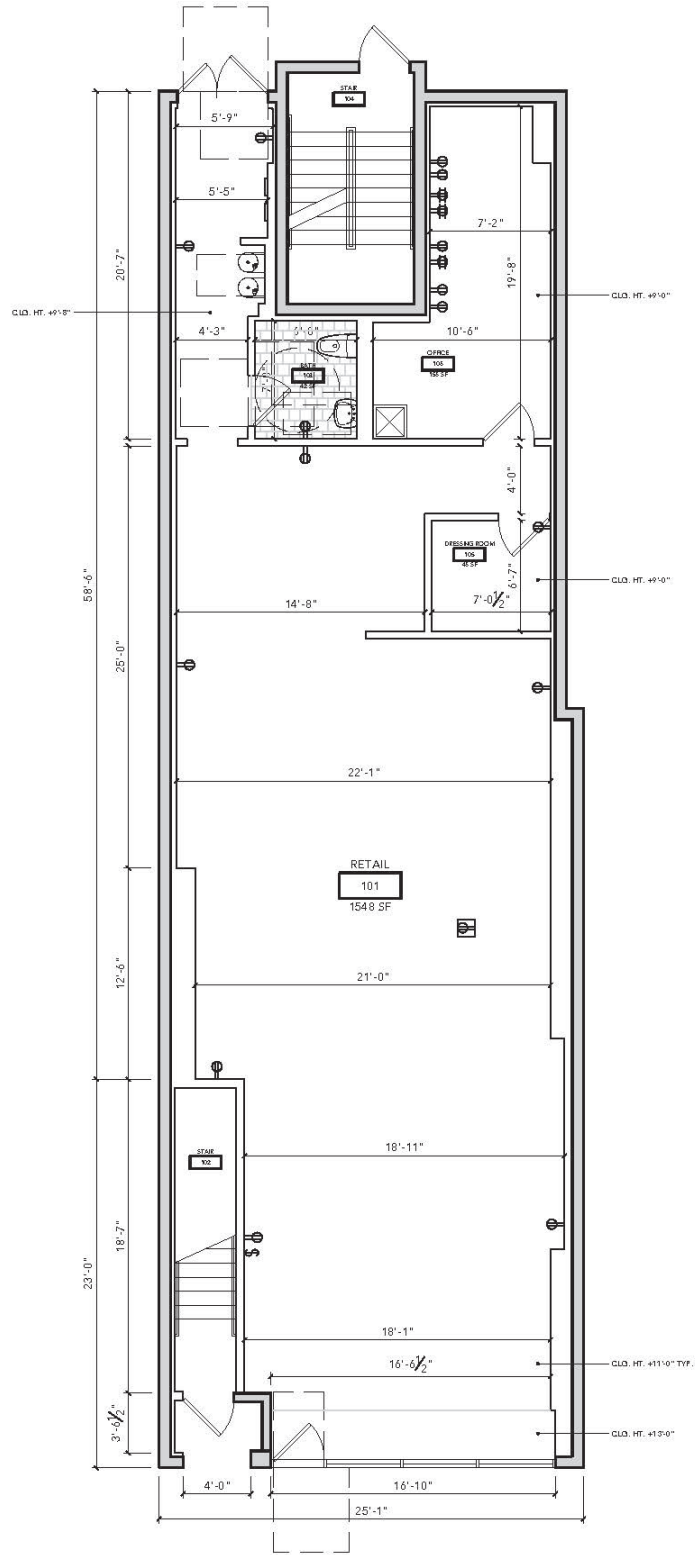
**John Vance** 312/782-1373  
jvance@stonerealestate.com

**STONE**  
REAL ESTATE

This information is from sources we deem to be reliable, however nothing contained herein should be construed as a representation on our part, as no independent verification of the information has been made by us.



# 3452 NORTH SOUTHPORT



SOUTHPORT AVE



EXCLUSIVE AGENTS

**William Winter** 312/878-9445  
wwinter@stonerealestate.com

**John Vance** 312/782-1373  
jvance@stonerealestate.com

**STONE**  
REAL ESTATE

STONE REAL ESTATE

# 3452 NORTH SOUTHPORT

ADDISON STREET

- lululemon athletic
- southport grocery and cafe
- Pink Moon Bay
- Dennys Lounge
- ALICE & WONDER
- ANTHROPOLOGIE
- claire's
- Sweaty Betty
- FedEx Office
- aligned
- bluemercury
- JOHNNY WAS
- Lange's Lounge

- WOODSTOCKS
- BUTCHERS
- Abercrombie & Fitch
- PAPER SOURCE
- CustomEyes
- THIRDLOVE

CORNELIA AVENUE

- KRISTAK
- Primrose
- 3452 N. SOUTHPORT**
- benefit
- Corridor
- Madswell
- EVEREVE
- BUCK MASON
- BONOBOS

- Crosby's Kitchen
- FRAMEBRIDGE
- Free People
- VUORI
- ARC'TERYX
- Capital One

SOUTHPORT AVENUE

NEWPORT AVENUE

- WARBY PARKER
- LUSH
- lens|crafters
- KENDRA SCOTT
- POPBELLY
- Casper
- GAP

- J.CREW
- Dentologie
- noodles company
- ATHLETA

Southport El Station



ROSCOE AVENUE



EXCLUSIVE AGENTS

**William Winter** 312/878-9445  
wwinter@stonerealestate.com

**John Vance** 312/782-1373  
jvance@stonerealestate.com

**STONE**  
REAL ESTATE