

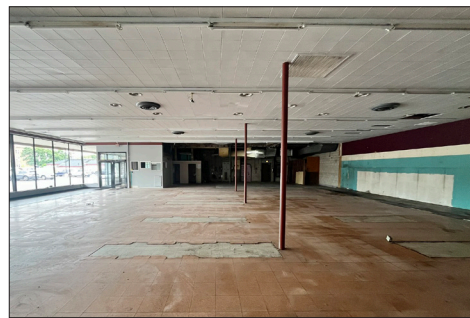
LAKEVIEW PLAZA | 3014 N. ASHLAND AVE.



6,000
Square feet available



162K
Daytime population in a three mile radius



Retail Space with Surface Parking Available

PROPERTY DESCRIPTION

- Rarely available retail space located in Chicago's Lakeview neighborhood;
- Large surface parking lot with an abundance of parking for customers and tenants;
- Highly visible space with great signage opportunities;
- Usable lower level basement ideal for storage;
- Adjacent to high performing Whole Foods and Jewel Osco grocery stores;
- Surrounded by exceptional incomes and household density.



\$245K
Average HH income in a one mile radius



275K
Households in a three mile radius

DEMOGRAPHICS

	1 MILE	2 MILE	3 MILE
POPULATION	64,959	276,918	545,066
HOUSEHOLDS	29,790	143,516	275,597
AVERAGE HH INCOME	\$245,383	\$182,095	\$161,895
DAYTIME POPULATION	22,886	89,528	162,512

AREA CO-TENANTS



545K
People in a three mile radius

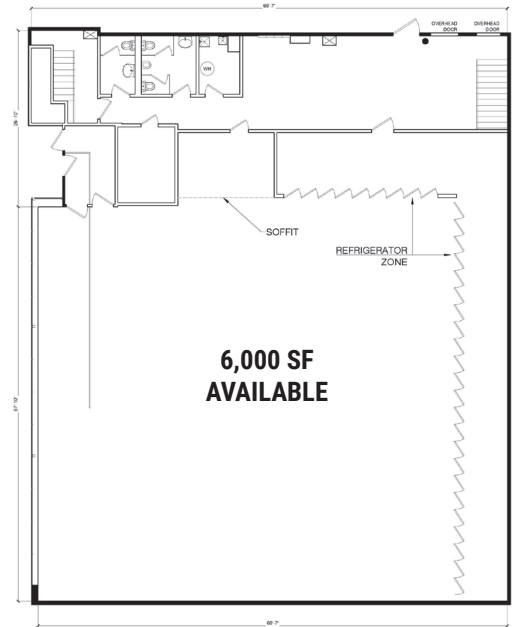
EXCLUSIVE AGENTS

Ves Pavlovic 312/782-1374
ves@stonerealestate.com

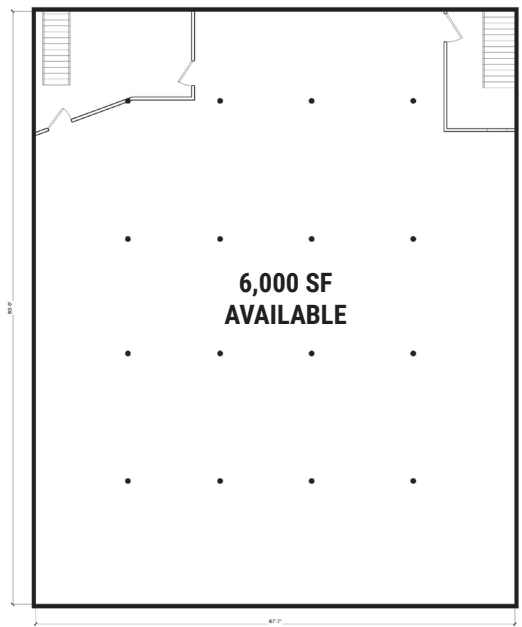
STONE
REAL ESTATE

LAKEVIEW PLAZA | 3014 N. ASHLAND AVE.

GROUND FLOOR



BASEMENT LEVEL

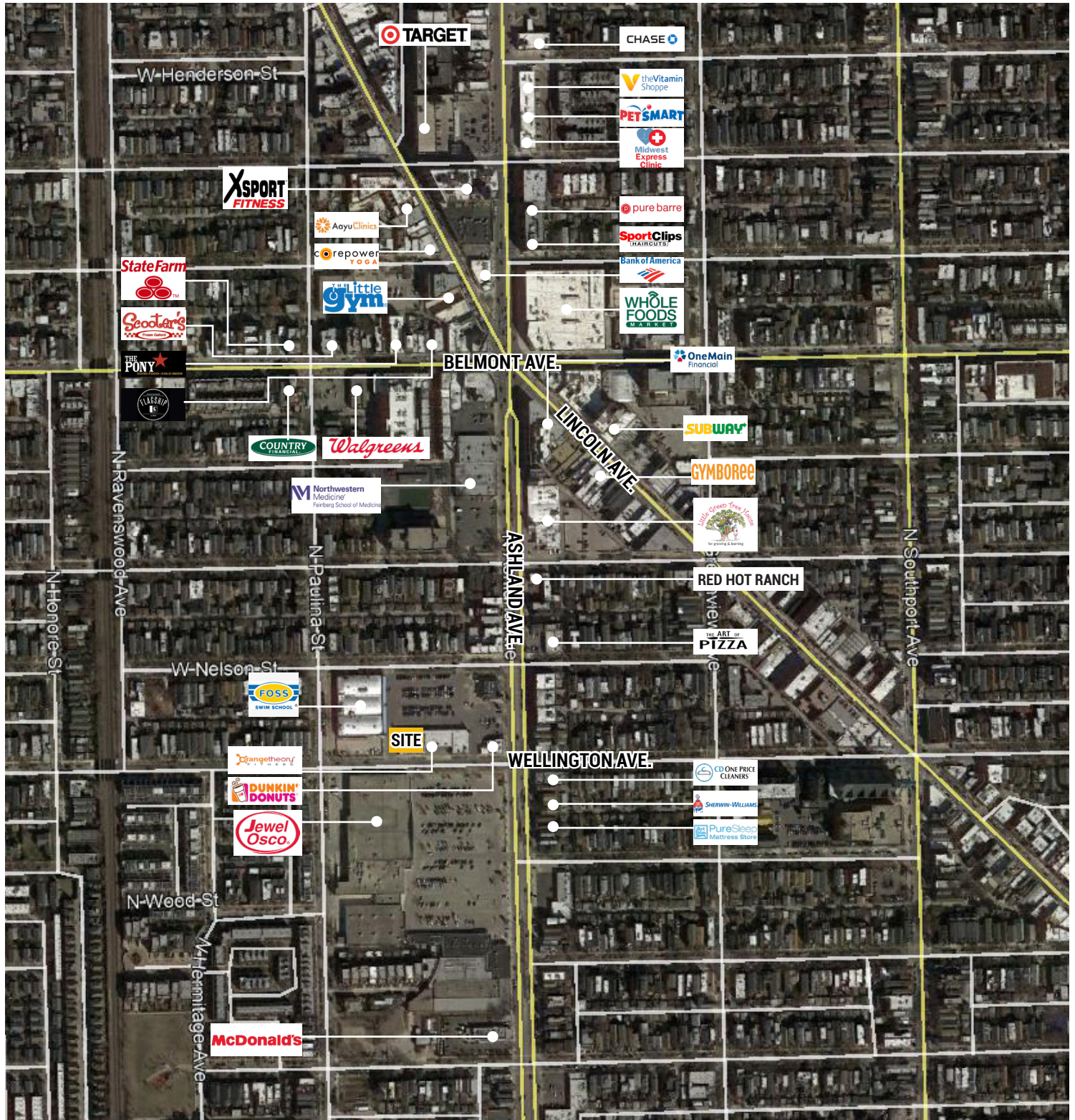


EXCLUSIVE AGENTS

Ves Pavlovic 312/782-1374
ves@stonerealestate.com

STONE REAL ESTATE

LAKEVIEW PLAZA | 3014 N. ASHLAND AVE.



EXCLUSIVE AGENTS

Ves Pavlovic 312/782-1374
ves@stonerealestate.com

STONE
REAL ESTATE