

STONE REAL ESTATE

LAKEVIEW PLAZA | 3014 N. ASHLAND AVE.



3.2-10K

Square feet available



162K

Daytime population in a three mile radius



\$245K

Average HH income in a one mile radius



275K

Households in a three mile radius



545K

People in a three mile radius

Retail Space with Surface Parking Available

PROPERTY DESCRIPTION

- Rarely available retail space located in Chicago's Lakeview neighborhood;
- Fully built out daycare with outdoor play area;
- Large surface parking lot with an abundance of parking for customers and tenants;
- Highly visible space with great signage opportunities;
- Adjacent to high performing Whole Foods and Jewel Osco grocery stores;
- Surrounded by exceptional incomes and household density.

AREA CO-TENANTS



DEMOGRAPHICS

	1 MILE	2 MILE	3 MILE
POPULATION	64,959	276,918	545,066
HOUSEHOLDS	29,790	143,516	275,597
AVERAGE HH INCOME	\$245,383	\$182,095	\$161,895
DAYTIME POPULATION	22,886	89,528	162,512

EXCLUSIVE AGENTS

Ves Pavlovic 312/782-1374
ves@stonerealestate.com

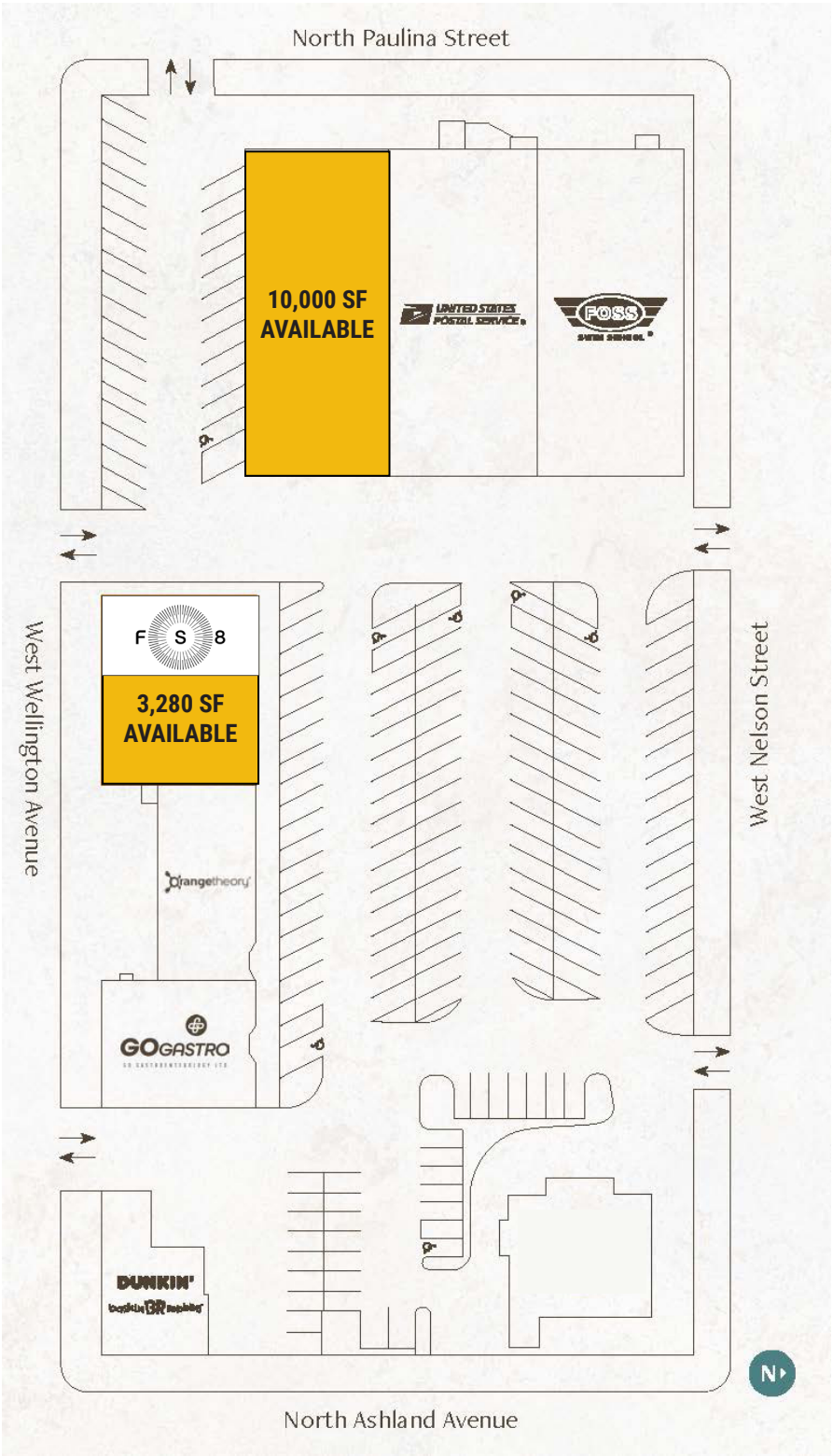
STONE
REAL ESTATE

This information is from sources we deem to be reliable, however nothing contained herein should be construed as a representation on our part, as no independent verification of the information has been made by us.



STONE REAL ESTATE

LAKEVIEW PLAZA | 3014 N. ASHLAND AVE.



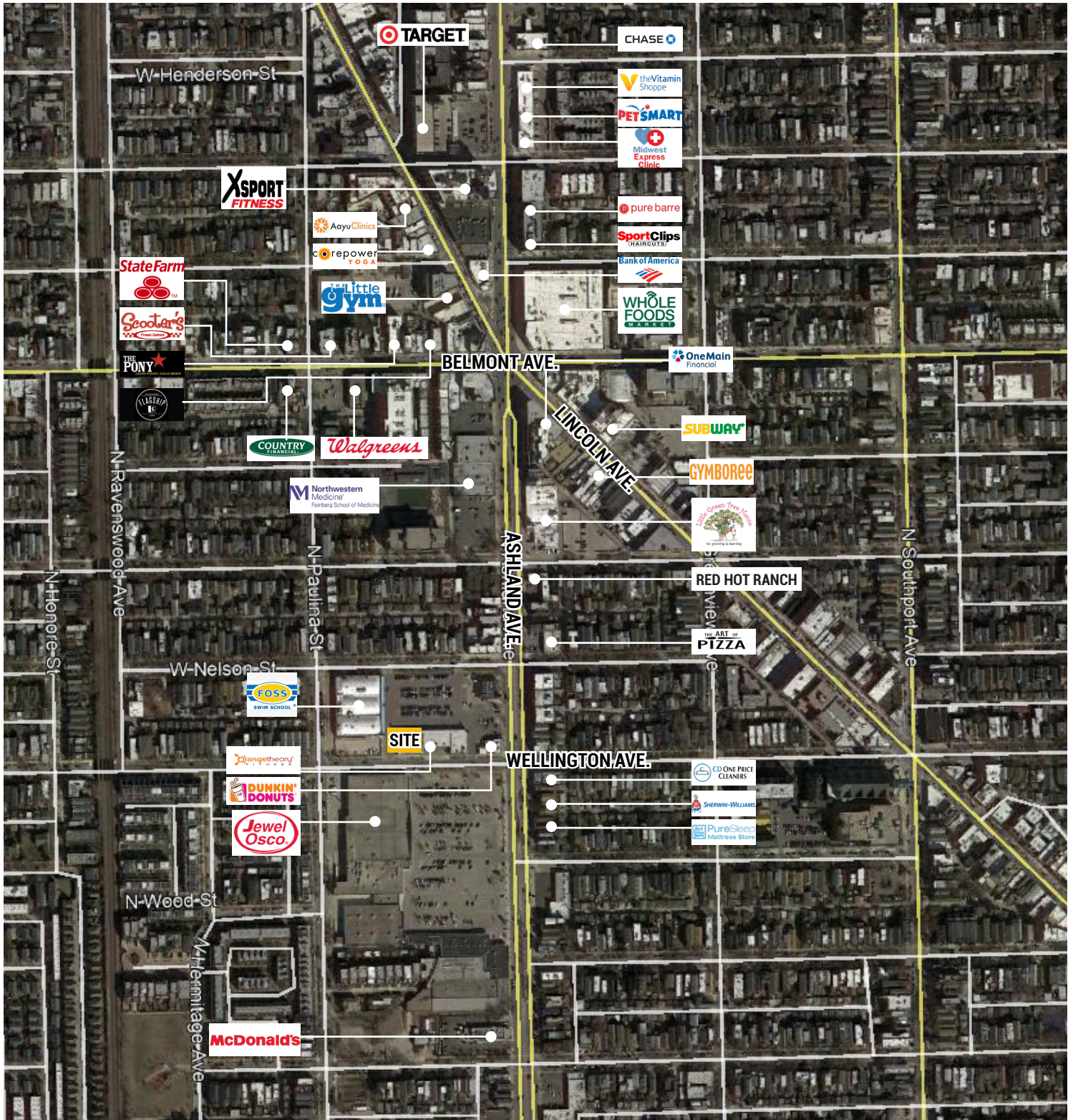
EXCLUSIVE AGENTS

Ves Pavlovic 312/782-1374
ves@stonerealestate.com

STONE
REAL ESTATE

STONE REAL ESTATE

LAKEVIEW PLAZA | 3014 N. ASHLAND AVE.



EXCLUSIVE AGENTS

Ves Pavlovic 312/782-1374
ves@stonerealestate.com

STONE
REAL ESTATE