

ONE EAST DELAWARE | GOLD COAST



1.0-2.1K

Square feet available



116K

Population in one mile radius



263K

Daytime population in one mile radius



\$183K

Average income in one mile radius



13.8K

Vehicles per day on State Street

Medical/Retail/Office Space in the Heart of the Gold Coast



PROPERTY DESCRIPTION

- Premier Gold Coast address;
- Easily accessible boutique building;
- Efficient space sizes;
- Surrounded by restaurants and luxury retailers;
- Parking available.

AVAILABLE SPACES

- Suite 208 - 2,100 rsf (2nd Generation Fitness Studio)
- Suite 310 - 1,100 rsf (Brand New Office Suite Recently Completed)
- Suite 502 - 1,050 rsf (Medical/Office)

DEMOGRAPHICS

	1/4 MILE	1/2 MILE	1 MILE
POPULATION	13,919	46,198	116,732
AVERAGE HH INCOME	\$175,236	\$165,760	\$183,227
DAYTIME POPULATION	20,200	60,459	263,072

AREA RETAILERS/RESTAURANTS



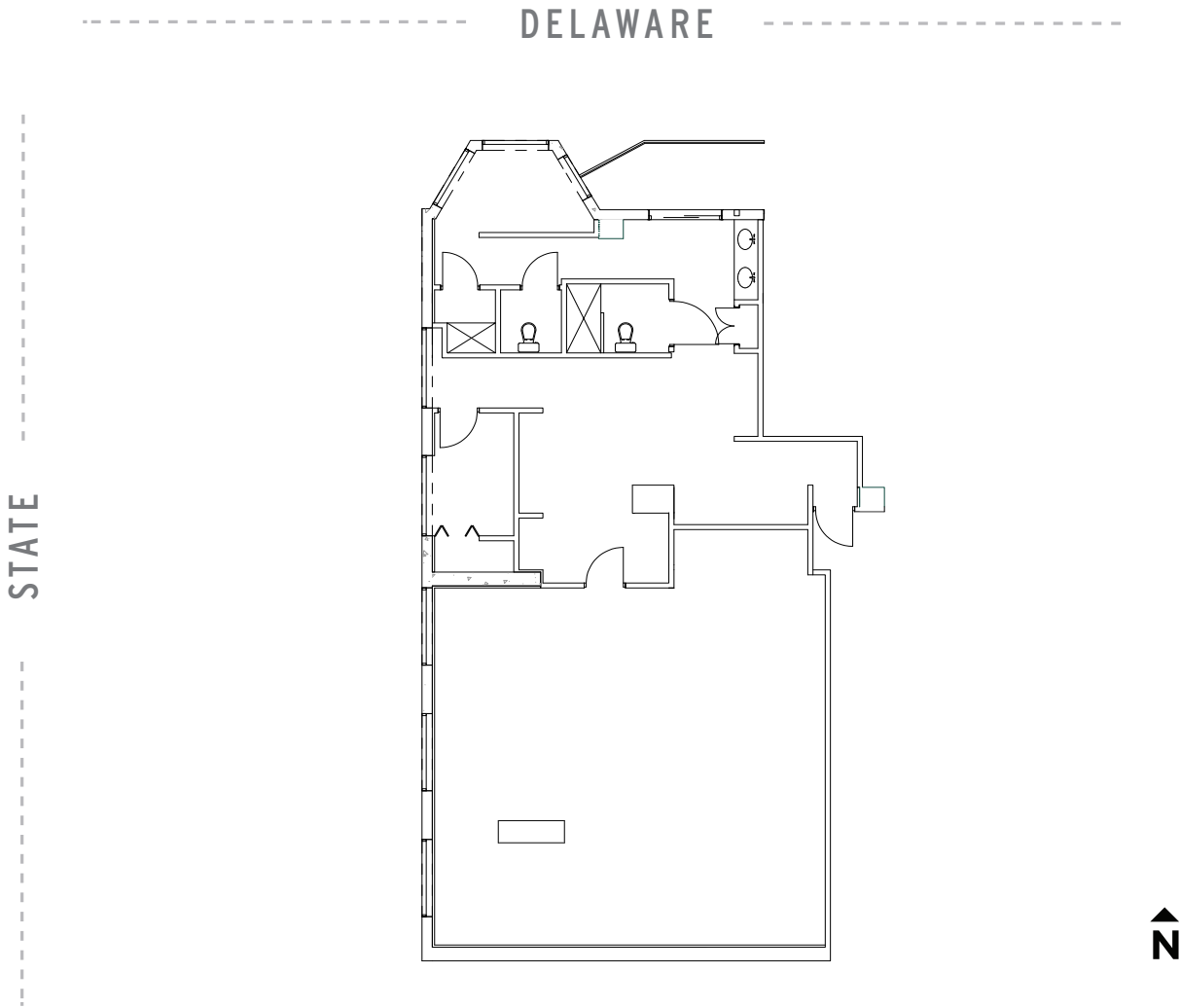
EXCLUSIVE AGENTS

Noah O'Neill 312/245-5206
noah@stonerealestate.com

STONE
REAL ESTATE

ONE EAST DELAWARE | GOLD COAST

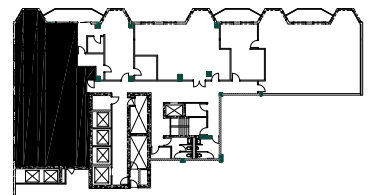
SUITE 208 - 2,100 SF 2ND GENERATION FITNESS STUDIO



SUITE FEATURES

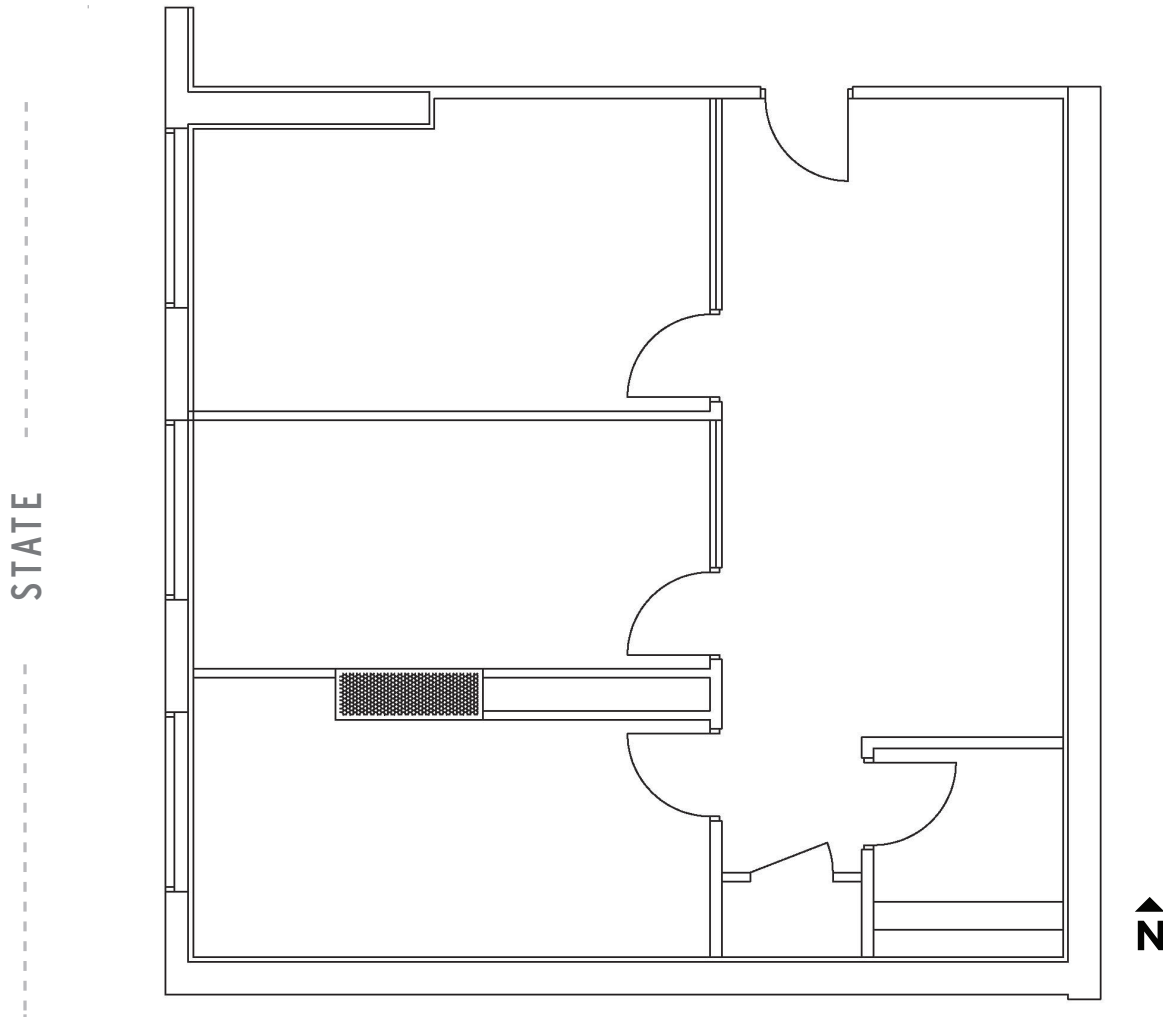
- Existing fitness studio with windows
- Reception
- Restrooms/showers
- Office/storage room

KEY



ONE EAST DELAWARE | GOLD COAST

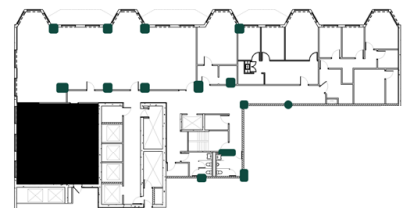
SUITE 310 - 1,100 SF NEW OFFICE SPEC SUITE



SUITE FEATURES

- New move in ready conditions
- Windowline facing State Street
- 3 private offices
- Kitchenette
- Open area

KEY

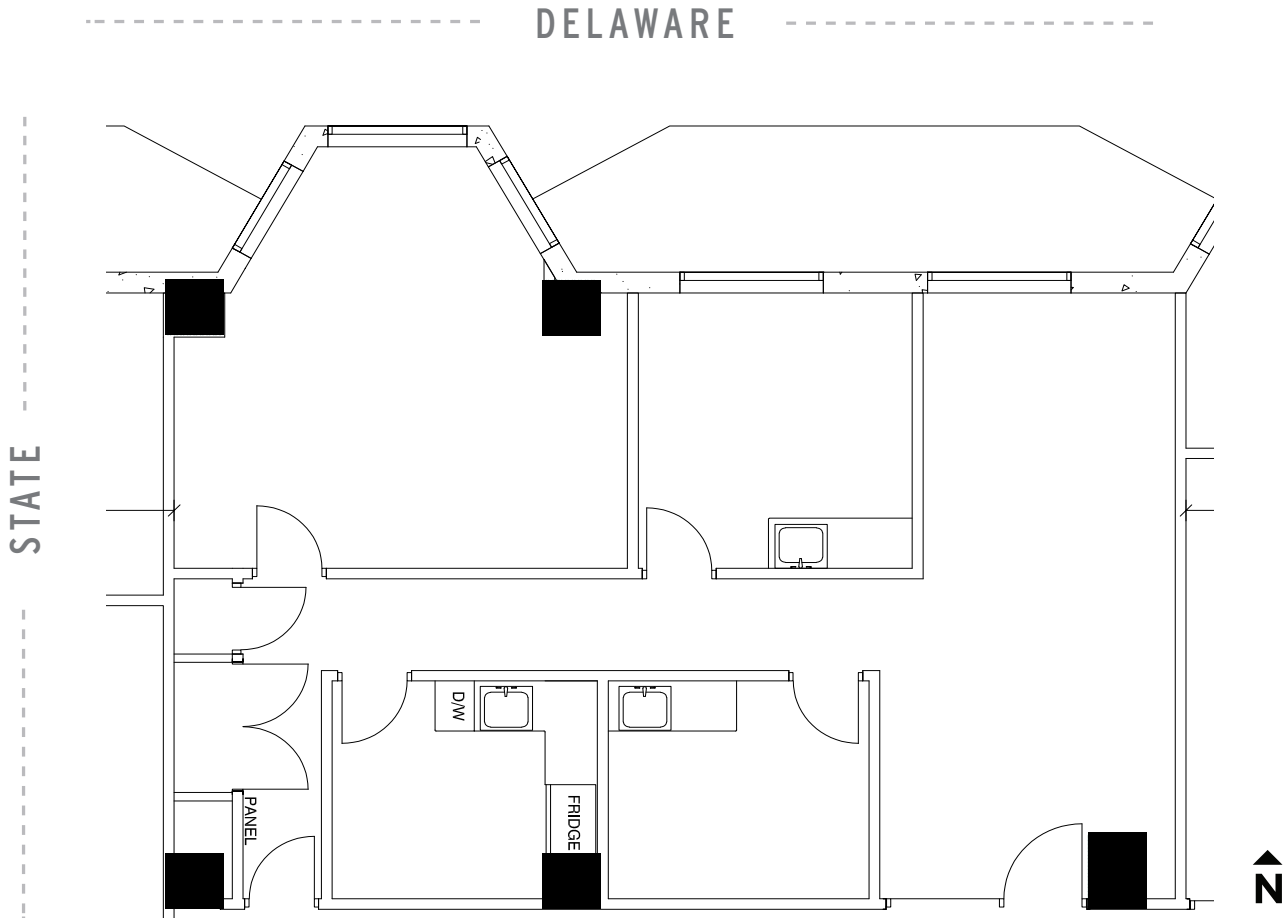


EXCLUSIVE AGENTS

Noah O'Neill 312/245-5206
noah@stonerealestate.com

ONE EAST DELAWARE | GOLD COAST

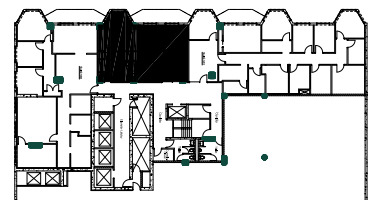
SUITE 502 - 1,050 SF EXISTING MEDICAL CONDITIONS



SUITE FEATURES

- 5th floor retail with existing medical conditions
- Windowline overlooking Delaware Place
- Reception area
- Two exam rooms with sinks
- Large office/consultation room
- Break room
- Storage

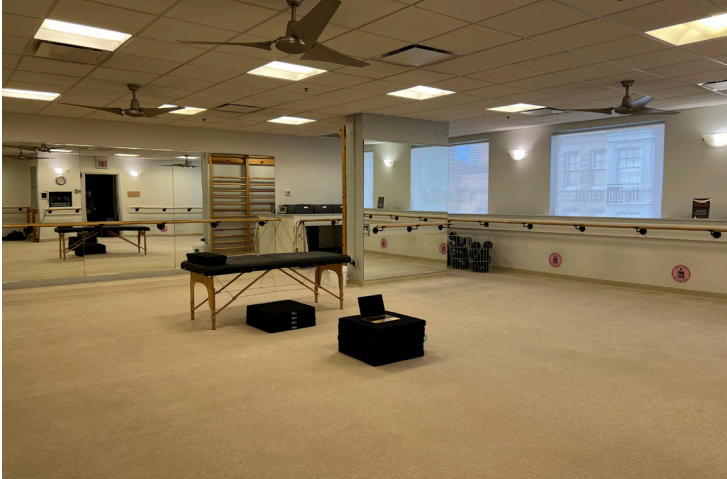
KEY



STONE REAL ESTATE

ONE EAST DELAWARE | GOLD COAST

SUITE 208



EXCLUSIVE AGENTS

Noah O'Neill 312/245-5206
noah@stonerealestate.com

STONE
REAL ESTATE

STONE REAL ESTATE

ONE EAST DELAWARE | GOLD COAST

SUITE 310



EXCLUSIVE AGENTS

Noah O'Neill 312/245-5206
noah@stonerealestate.com

STONE
REAL ESTATE

STONE REAL ESTATE

ONE EAST DELAWARE | GOLD COAST

SUITE 502



EXCLUSIVE AGENTS

Noah O'Neill 312/245-5206
noah@stonerealestate.com

STONE
REAL ESTATE