

STONE REAL ESTATE

# ONE EAST DELAWARE | GOLD COAST



**2.1&2.7K**

Square feet  
available



**116K**

Population in  
one mile radius



**263K**

Daytime population in  
one mile radius



**\$183K**

Average income in  
one mile radius

## Medical/Retail/Office Space in the Heart of the Gold Coast



### PROPERTY DESCRIPTION

- Premier Gold Coast address;
- Easily accessible boutique building;
- Efficient space sizes;
- Surrounded by restaurants and luxury retailers;
- Parking available.

### AVAILABLE SPACES

- Suite 208 - 2,100 rsf (2nd Generation Fitness Studio)
- Suite 306 - 2,711 rsf (2nd Generation Medical)

### DEMOGRAPHICS

	1/4 MILE	1/2 MILE	1 MILE
POPULATION	13,919	46,198	116,732
AVERAGE HH INCOME	\$175,236	\$165,760	\$183,227
DAYTIME POPULATION	20,200	60,459	263,072

### AREA RETAILERS/RESTAURANTS



**13.8K**

Vehicles per day on  
State Street

### EXCLUSIVE AGENTS

**Noah O'Neill** 312/245-5206  
noah@stonerealestate.com

**STONE**  
REAL ESTATE

This information is from sources we deem to be reliable, however nothing contained herein should be construed as a representation on our part, as no independent verification of the information has been made by us.

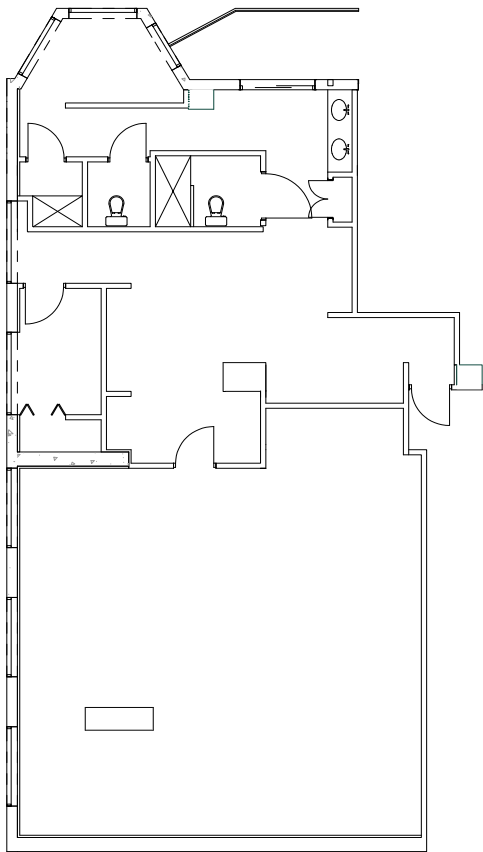


# ONE EAST DELAWARE | GOLD COAST

## SUITE 208 - 2,100 SF 2ND GENERATION FITNESS STUIO

DELAWARE

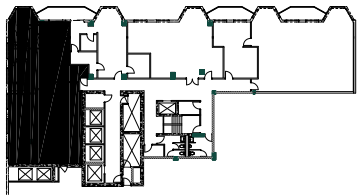
STATE



### SUITE FEATURES

- Existing fitness studio with windows
- Reception
- Restrooms/showers
- Office/storage room

### KEY



EXCLUSIVE AGENTS

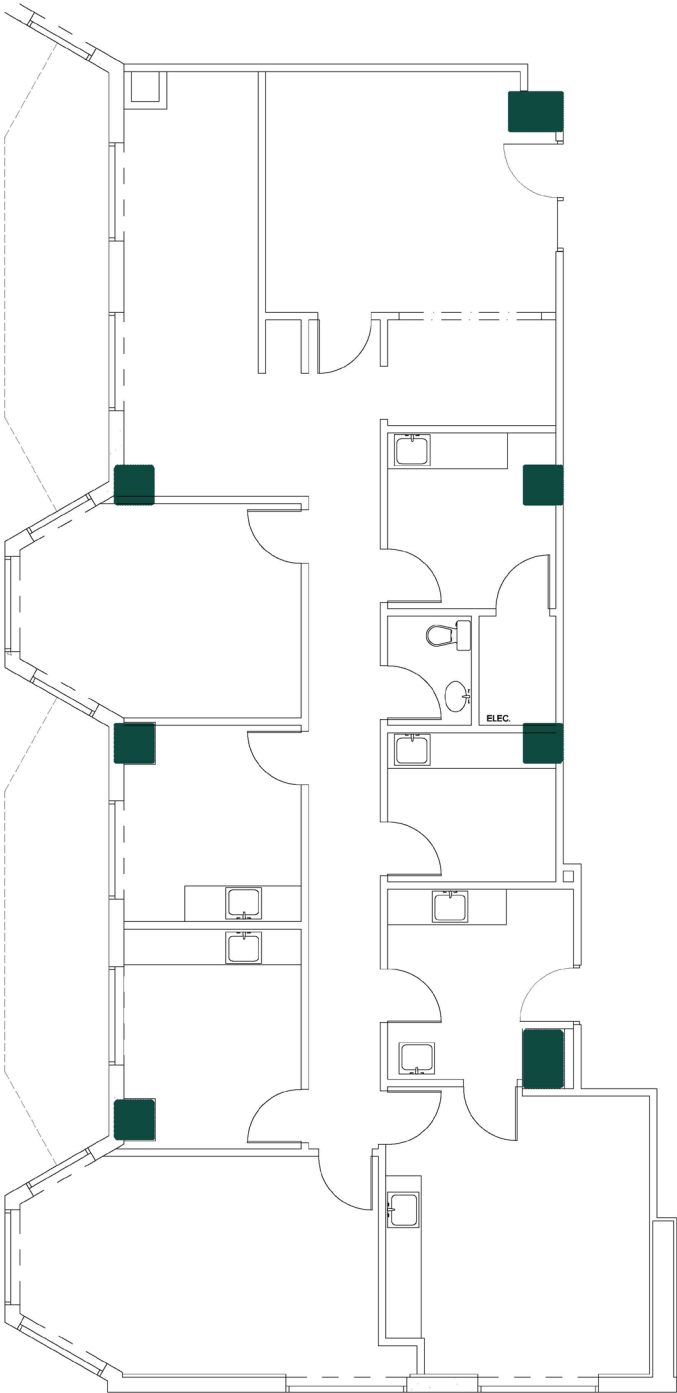
Noah O'Neill 312/245-5206  
noah@stonerealestate.com

STONE  
REAL ESTATE

STONE REAL ESTATE

# ONE EAST DELAWARE | GOLD COAST

SUITE 306 - 2,711 SF 2ND GENERATION MEDICAL



EXCLUSIVE AGENTS

Noah O'Neill 312/245-5206  
noah@stonerealestate.com

STONE  
REAL ESTATE



STONE REAL ESTATE

# ONE EAST DELAWARE | GOLD COAST

## SUITE 208



EXCLUSIVE AGENTS

**Noah O'Neill** 312/245-5206  
noah@stonerealestate.com

**STONE**  
REAL ESTATE