

STONE REAL ESTATE

1154 W. ARMITAGE



536K

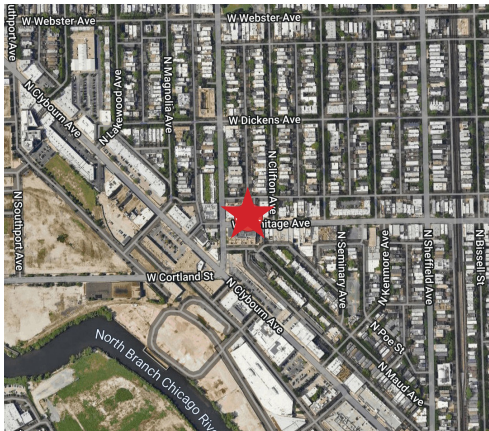
Total population in a three-mile radius



644K

Daytime population in three-mile radius

A Jewel in the Heart of Lincoln Park



PROPERTY DESCRIPTION

Notable jewelry box space located on Lincoln Park's trendiest thoroughfare. 1154 W. Armitage sits in close proximity to not only the boutiques that populate the Armitage corridor but also the big box users that dominate the highly trafficked North & Clybourn trade area. These factors coupled with the surrounding dense Lincoln Park residential population offers retailers the opportunity to service one of Chicago's most affluent neighborhoods.

AVAILABLE SPACE

885 SF



\$241K

Household income in a one-mile radius

DEMOGRAPHICS

	1 MILE	2 MILE	3 MILE
POPULATION	58,828	283,739	536,472
AVERAGE HH INCOME	\$241,431	\$193,128	\$176,921
DAYTIME POPULATION	26,153	117,970	644,910

AREA RETAILERS AND ATTRACTIONS



294K

Households in a three-mile radius

EXCLUSIVE AGENTS

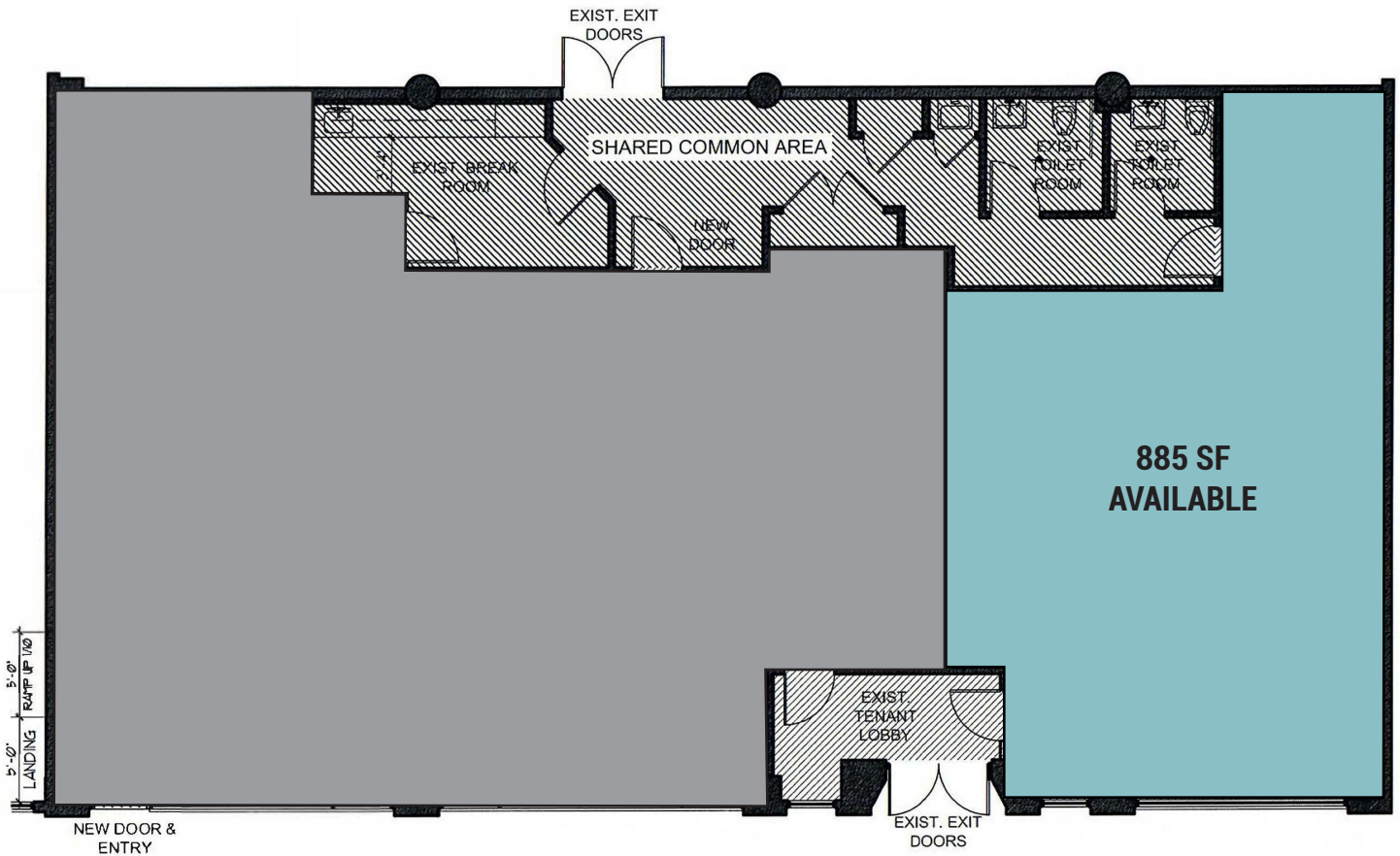
William Winter 312/878-9445
wwinter@stonerealestate.com

STONE
REAL ESTATE

This information is from sources we deem to be reliable, however nothing contained herein should be construed as a representation on our part, as no independent verification of the information has been made by us.



1154 W. ARMITAGE



W. ARMITAGE



EXCLUSIVE AGENTS

William Winter 312/878-9445
wwinter@stonerealestate.com

STONE
REAL ESTATE