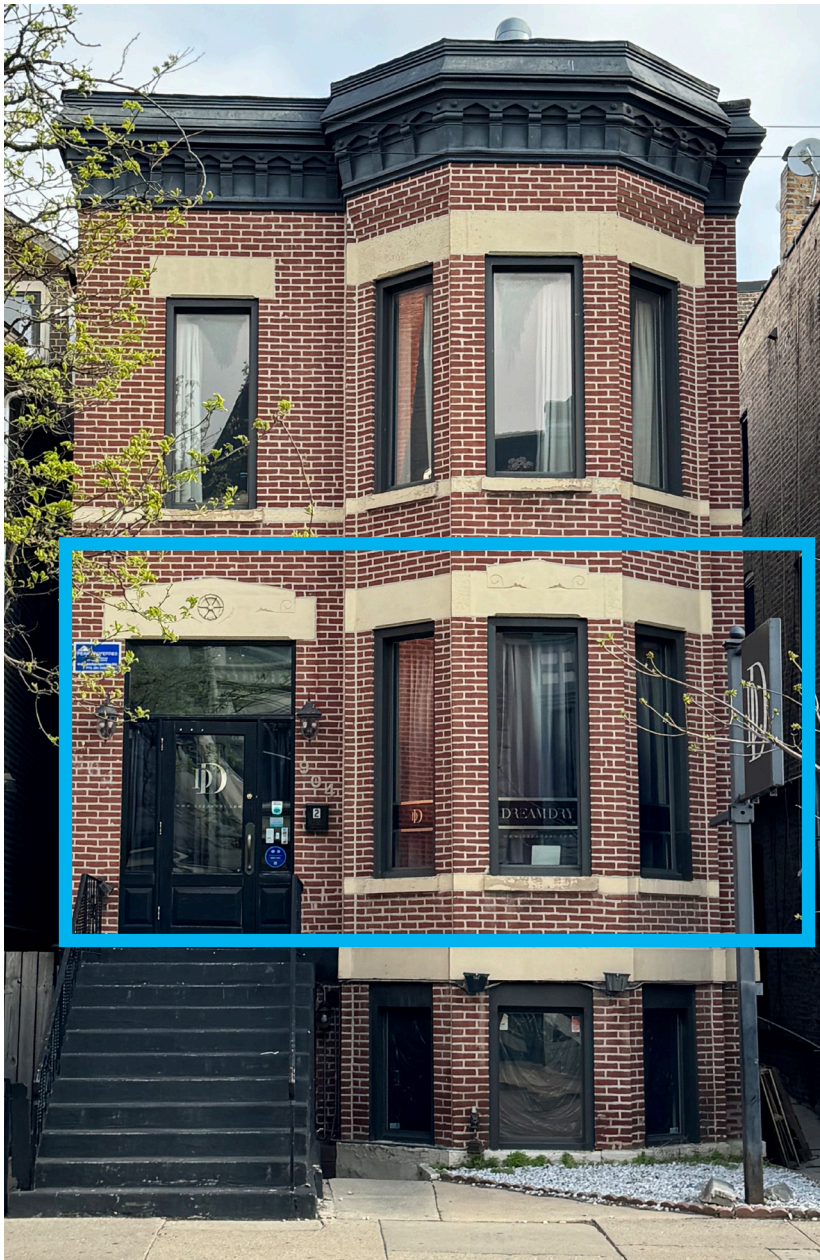


STONE REAL ESTATE

904 W. ARMITAGE



Step Up to Chicago's Best Boutique Street

PROPERTY DESCRIPTION

Situated on the boutique street in Chicago, 904 W. Armitage gives retailers the opportunity to join an unparalleled co-tenancy mix. The building's central location on Armitage puts you in the heart of this co-tenancy and also the beloved culinary offerings by Chicago's most respected restaurant operators. While Armitage may be the ultimate neighborhood street, 904 W. Armitage offers brands a truly national showcase.

AREA RETAILERS

SUMMER HOUSE SANTA MONICA TODD SNYDER

INDOCHINO

BUCK MASON



jenni kayne

PARACHUTE



BONOBOS

ARMITAGE ALE HOUSE



Clare V.



SERENA & LILY



allbirds

Aēsop.



1,360

Square feet available



18'

Frontage on Armitage Ave



63.5K

Population in one mile radius



27.9K

Daytime population in one mile radius

DEMOGRAPHICS

	.25 MILE	.5 MILE	1 MILE
POPULATION	4,895	14,218	63,530
HOUSEHOLDS	2,420	6,610	35,588
AVERAGE HH INCOME	\$336,003	\$304,507	\$227,059
DAYTIME POPULATION	1,721	7,586	27,971



\$336K

Avg HH income in a quarter-mile radius

EXCLUSIVE AGENTS

William Winter 312/878-9445
wwinter@stonerealestate.com

John Vance 312/782-1373
jvance@stonerealestate.com

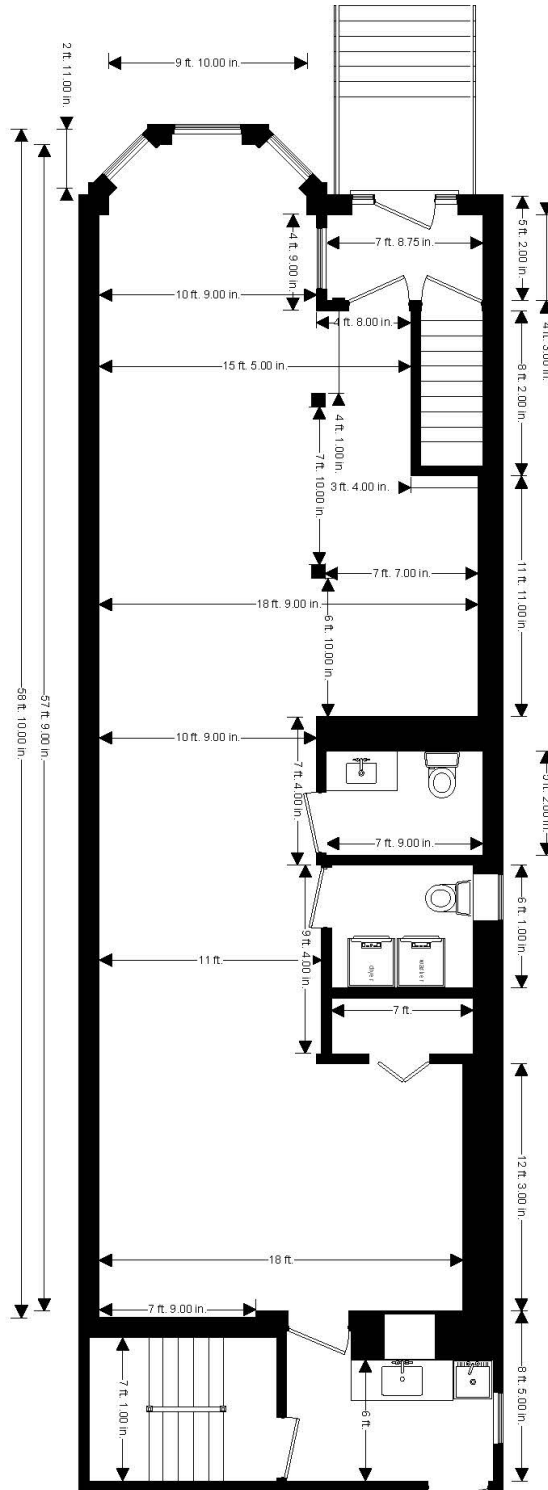
STONE
REAL ESTATE

This information is from sources we deem to be reliable, however nothing contained herein should be construed as a representation on our part, as no independent verification of the information has been made by us.



STONE REAL ESTATE

904 W. ARMITAGE



EXCLUSIVE AGENTS

William Winter 312/878-9445
wwinter@stonerealestate.com

John Vance 312/782-1373
jvance@stonerealestate.com

STONE
REAL ESTATE

STONE REAL ESTATE

904 W. ARMITAGE



EXCLUSIVE AGENTS

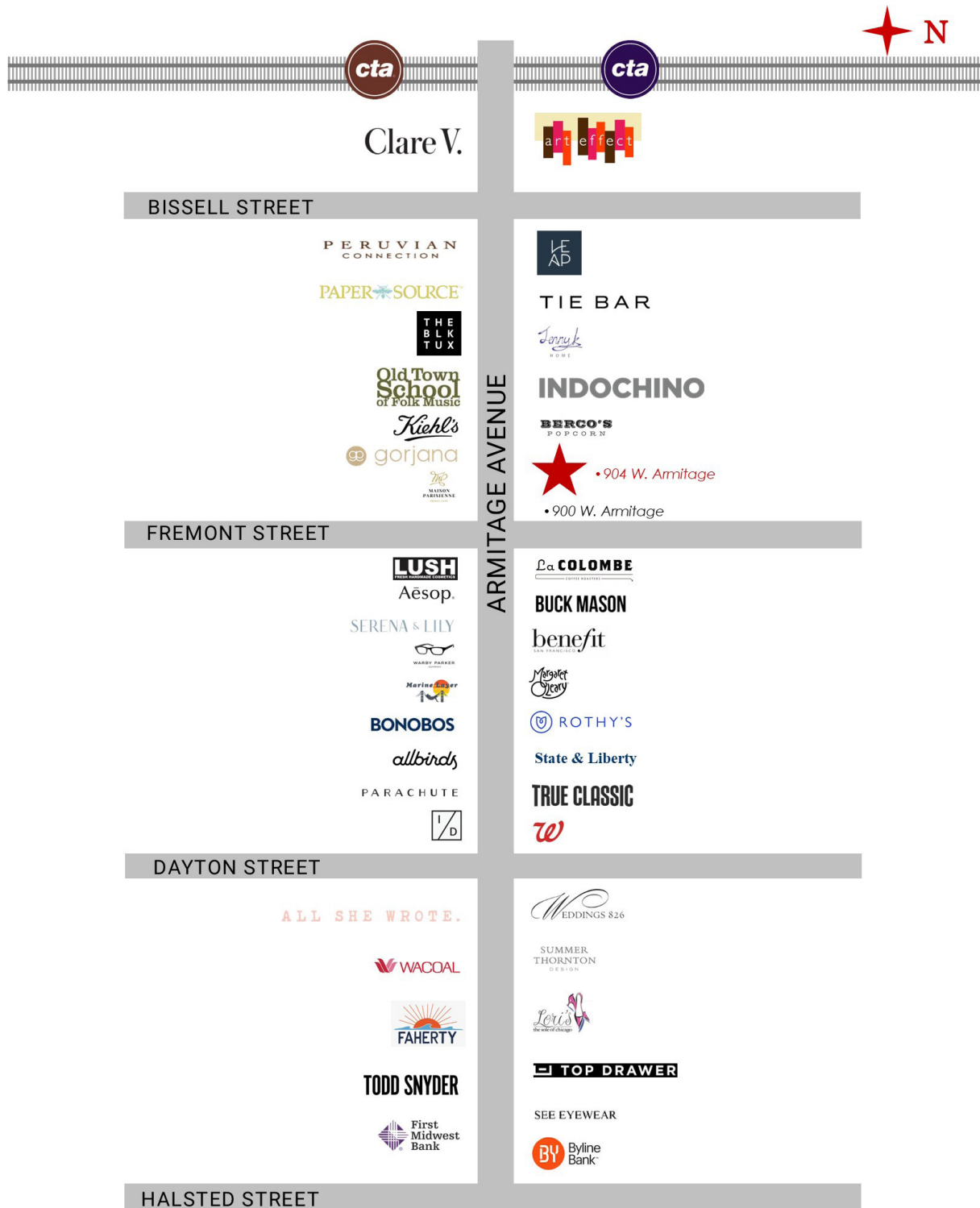
William Winter 312/878-9445
wwinter@stonerealestate.com

John Vance 312/782-1373
jvance@stonerealestate.com

STONE
REAL ESTATE

STONE REAL ESTATE

904 W. ARMITAGE



EXCLUSIVE AGENTS

William Winter 312/878-9445
wwinter@stonerealestate.com

John Vance 312/782-1373
jvance@stonerealestate.com

STONE
REAL ESTATE