

STONE REAL ESTATE

FORMER BANK WITH DRIVE THRU AVAILABLE

720 E. DUNDEE ROAD - PALATINE, IL



3,639
Square feet
available



35,178
Square feet
of land



100K
Population in
three mile radius



AREA RETAILERS



44K
Daytime population in
three mile radius

PROPERTY DESCRIPTION

- 3,639 sf former bank branch building;
- Three Drive thru lanes;
- Monument sign available;
- Across the street from Home Depot, Home Goods, Target and Petco and many other national retailers and restaurants;
- At signalized intersection.

TRAFFIC COUNTS

Rand Road: 33,000 vehicles per day
Dundee Road: 28,000 vehicles per day

DEMOGRAPHICS

	1 MILE	3 MILE	5 MILE
POPULATION	27,204	99,981	249,059
HOUSEHOLDS	10,007	40,481	98,708
AVERAGE HH INCOME	\$75,009	\$101,755	\$114,433
DAYTIME POPULATION	5,674	44,567	109,585



61K
Vehicles per day at
the intersection

EXCLUSIVE AGENTS

Jason Gustaveson 312/372-2688
jason@stonerealestate.com

Ves Pavlovic 312/782-1374
ves@stonerealestate.com

STONE
REAL ESTATE

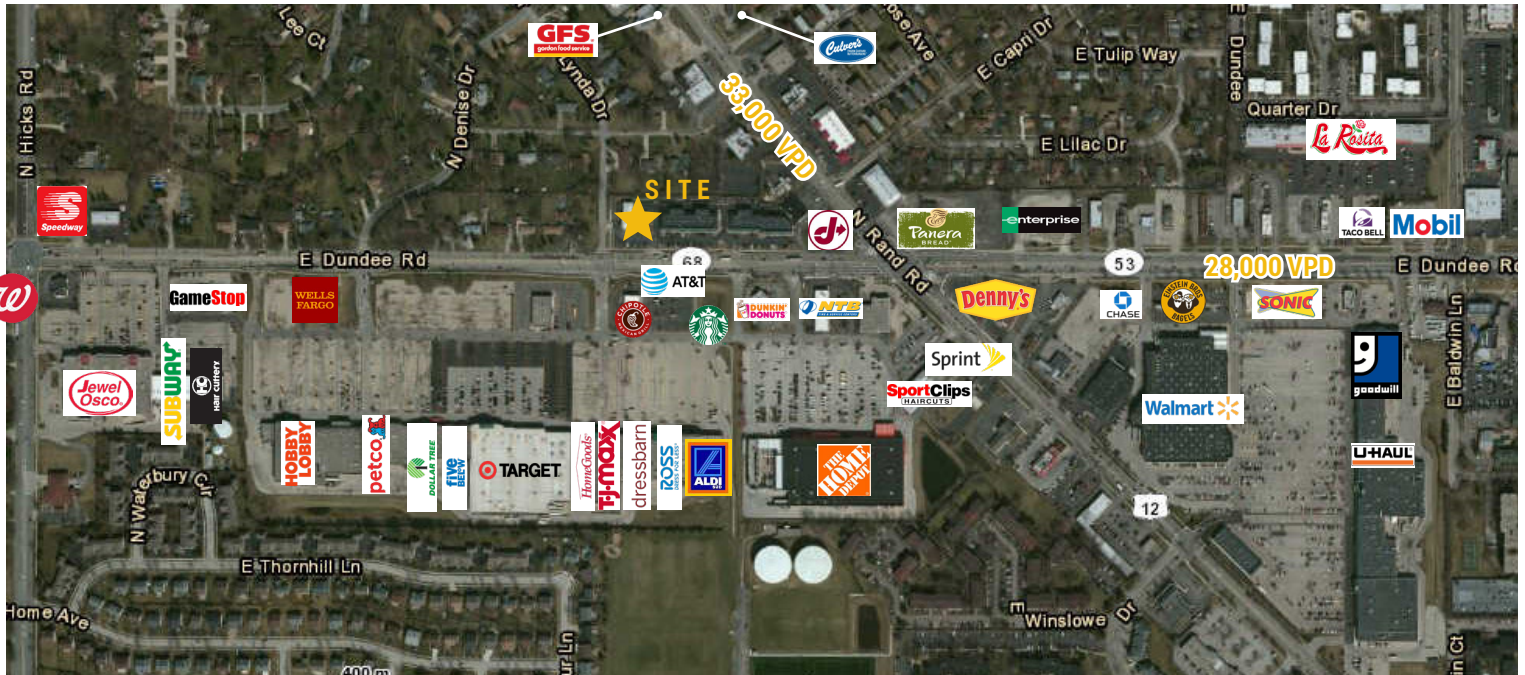
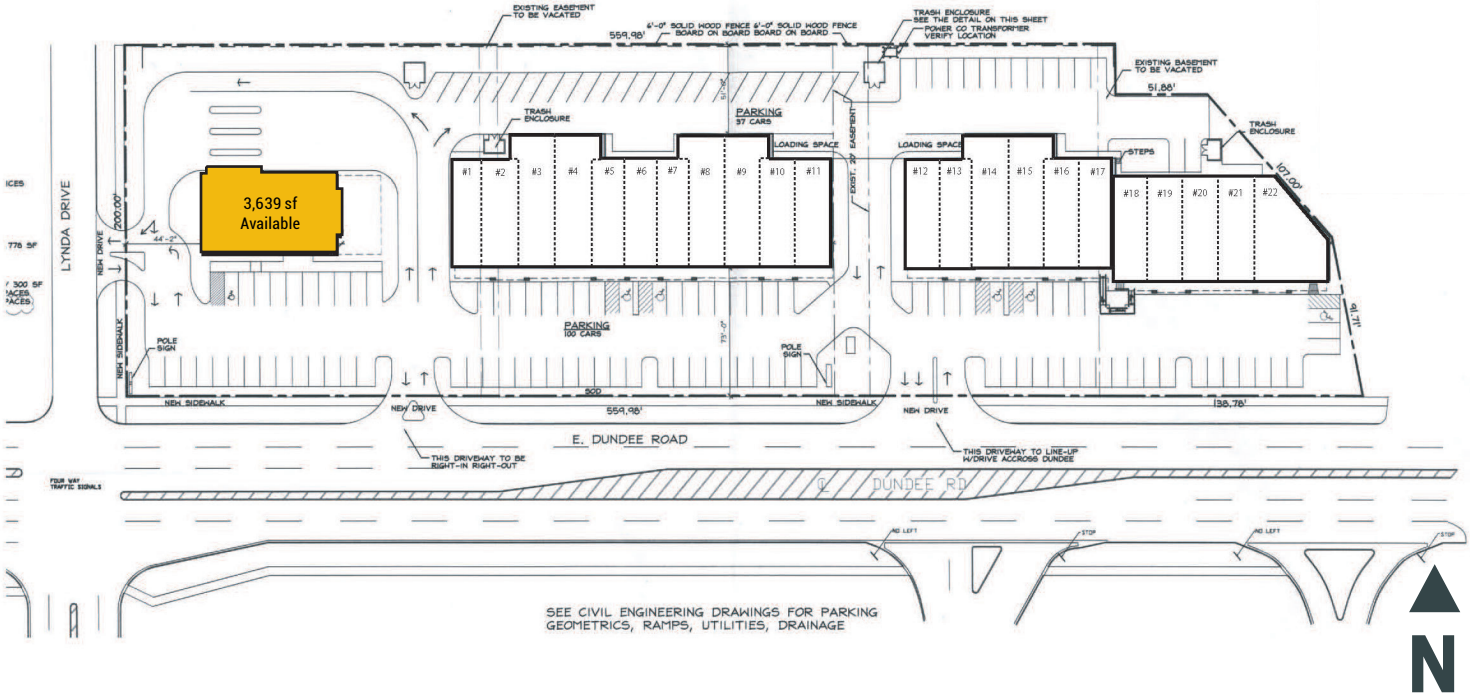
This information is from sources we deem to be reliable, however nothing contained herein should be construed as a representation on our part, as no independent verification of the information has been made by us.



STONE REAL ESTATE

FORMER BANK WITH DRIVE THRU AVAILABLE

720 E. DUNDEE ROAD - PALATINE, IL



EXCLUSIVE AGENTS

Jason Gustavson 312/372-2688
jason@stonerealestate.com

Ves Pavlovic 312/782-1374
ves@stonerealestate.com

STONE
REAL ESTATE