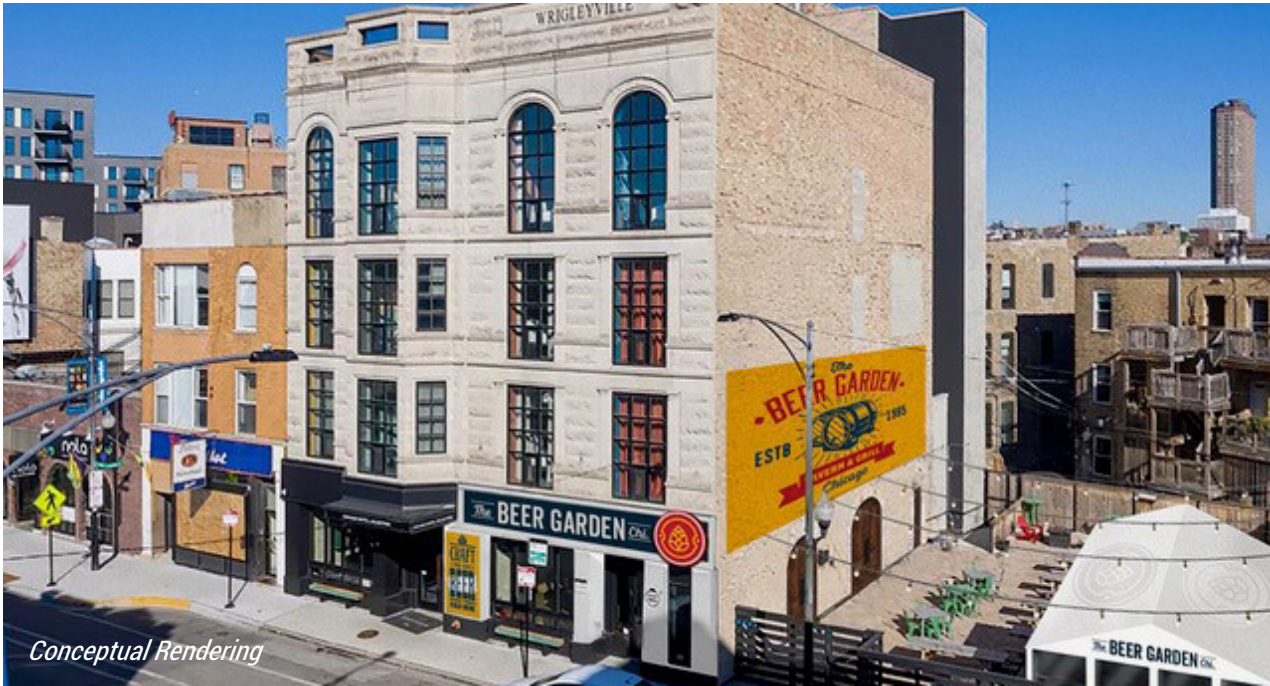


# 3475 N. CLARK STREET



Conceptual Rendering

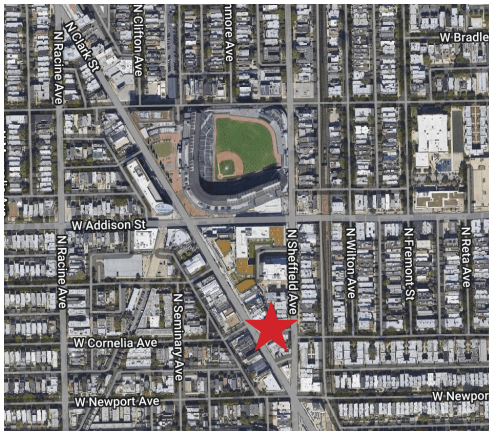


**3,572**  
SF Built Out  
Restaurant Space



**76K**  
Daytime population in  
two-mile radius

## The Best Patio in Wrigleyville



### PROPERTY DESCRIPTION

Bi-level and fully built-out restaurant space with a large patio opportunity in the heart of Wrigleyville's Clark Street corridor. Situated at the base of a boutique hotel in one of Chicago's hottest neighborhoods, 3475 N. Clark offers restaurateurs the opportunity to capitalize on a true 365 day per year trade area.

### AVAILABLE SPACE

Ground floor: 1,857 sf  
Lower Level: 1,715 sf  
Patio: 3,500 sf



**\$171K**  
Household income in a  
two-mile radius

### DEMOGRAPHICS

	1 MILE	2 MILE	3 MILE
POPULATION	91,486	226,828	419,047
AVERAGE HH INCOME	\$162,912	\$171,514	\$167,532
DAYTIME POPULATION	26,251	76,209	134,173

### AREA RETAILERS AND ATTRACTIONS



**226K**  
Total population in a  
two-mile radius

#### EXCLUSIVE AGENTS

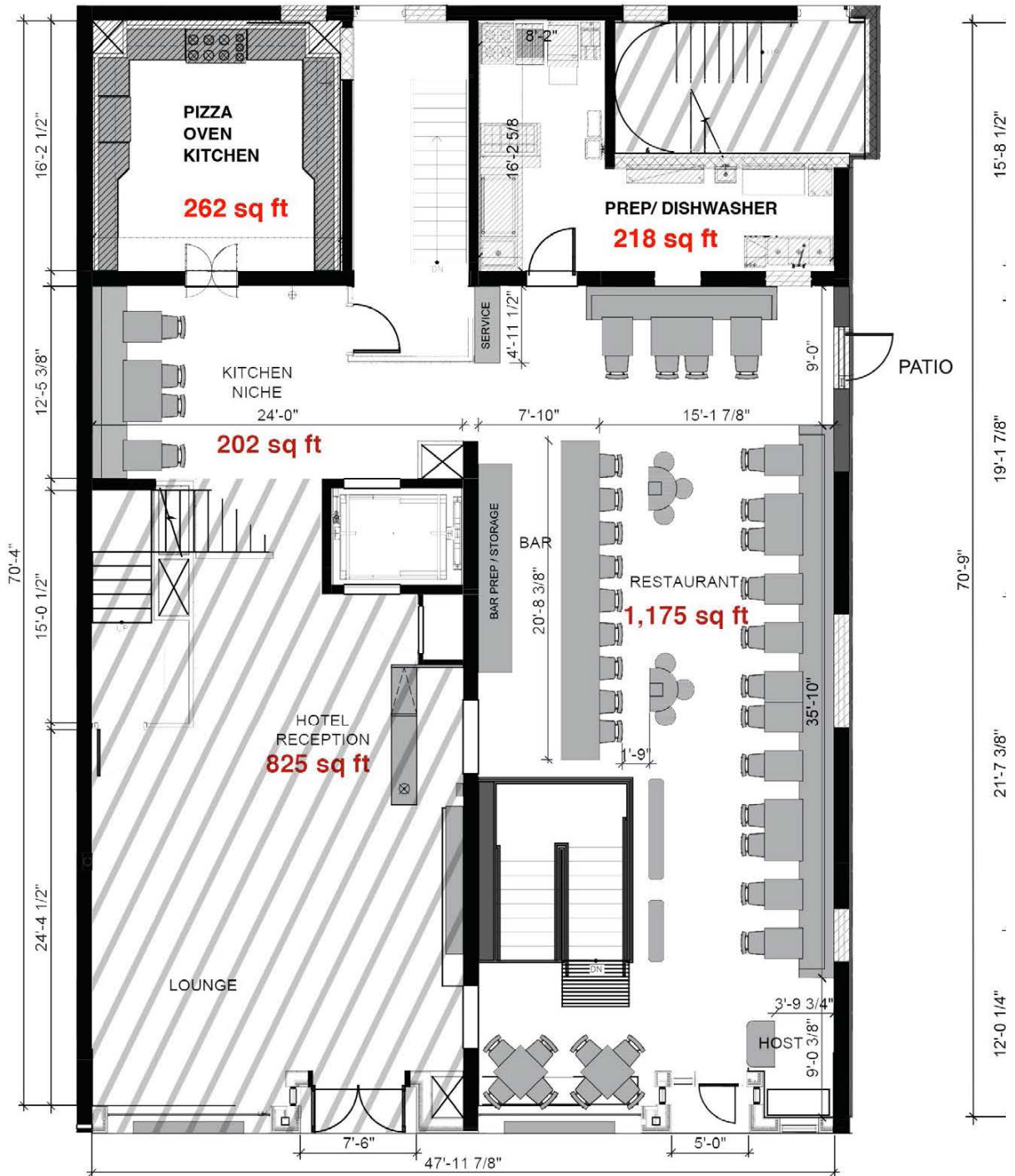
**William Winter** 312/878-9445  
wwinter@stonerealestate.com

**STONE**  
REAL ESTATE

This information is from sources we deem to be reliable, however nothing contained herein should be construed as a representation on our part, as no independent verification of the information has been made by us.



GROUND FLOOR PLAN



N. CLARK

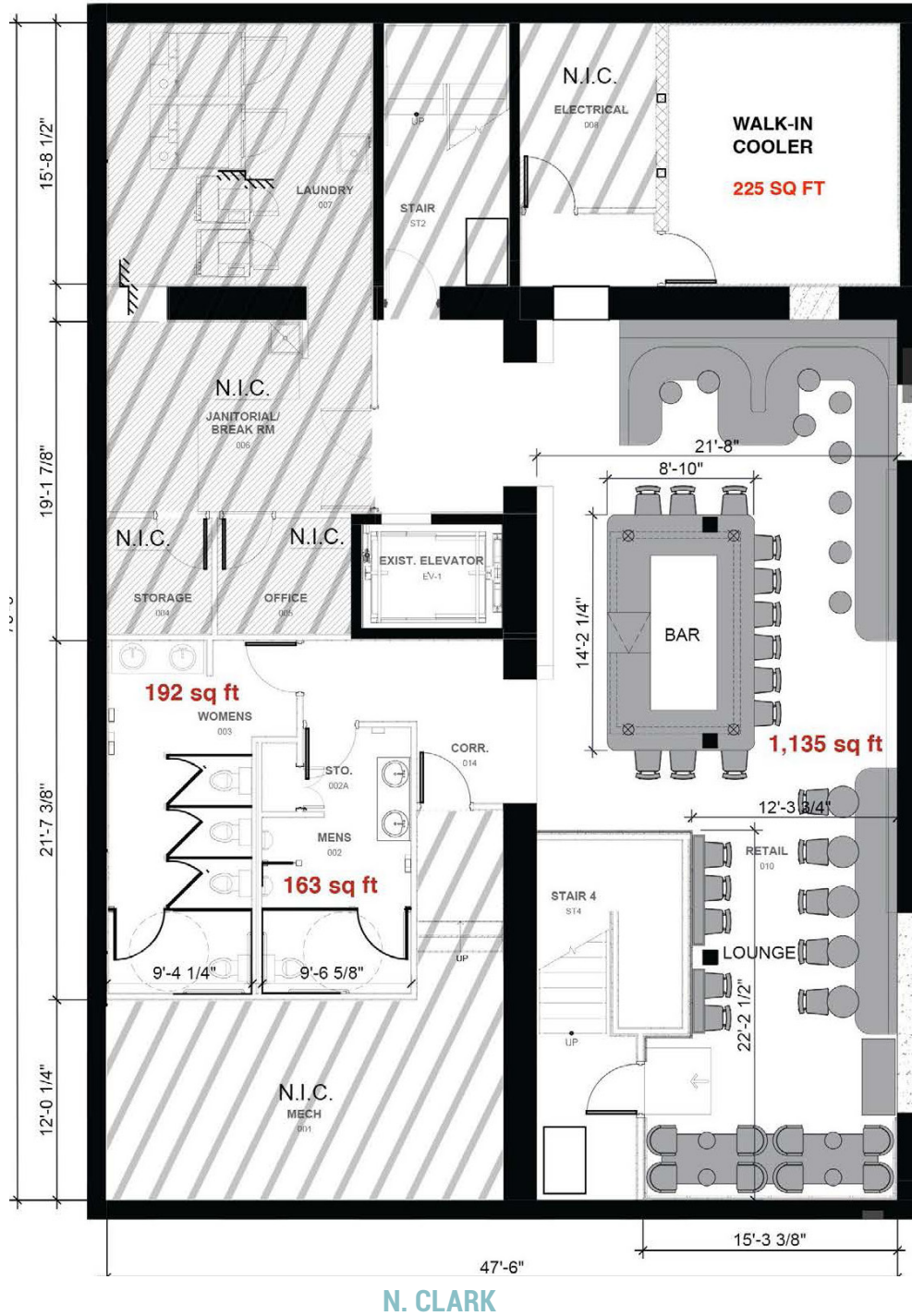
EXCLUSIVE AGENTS

William Winter 312/878-9445  
wwinter@stonerealestate.com

STONE  
REAL ESTATE



LOWER LEVEL PLAN



N. CLARK

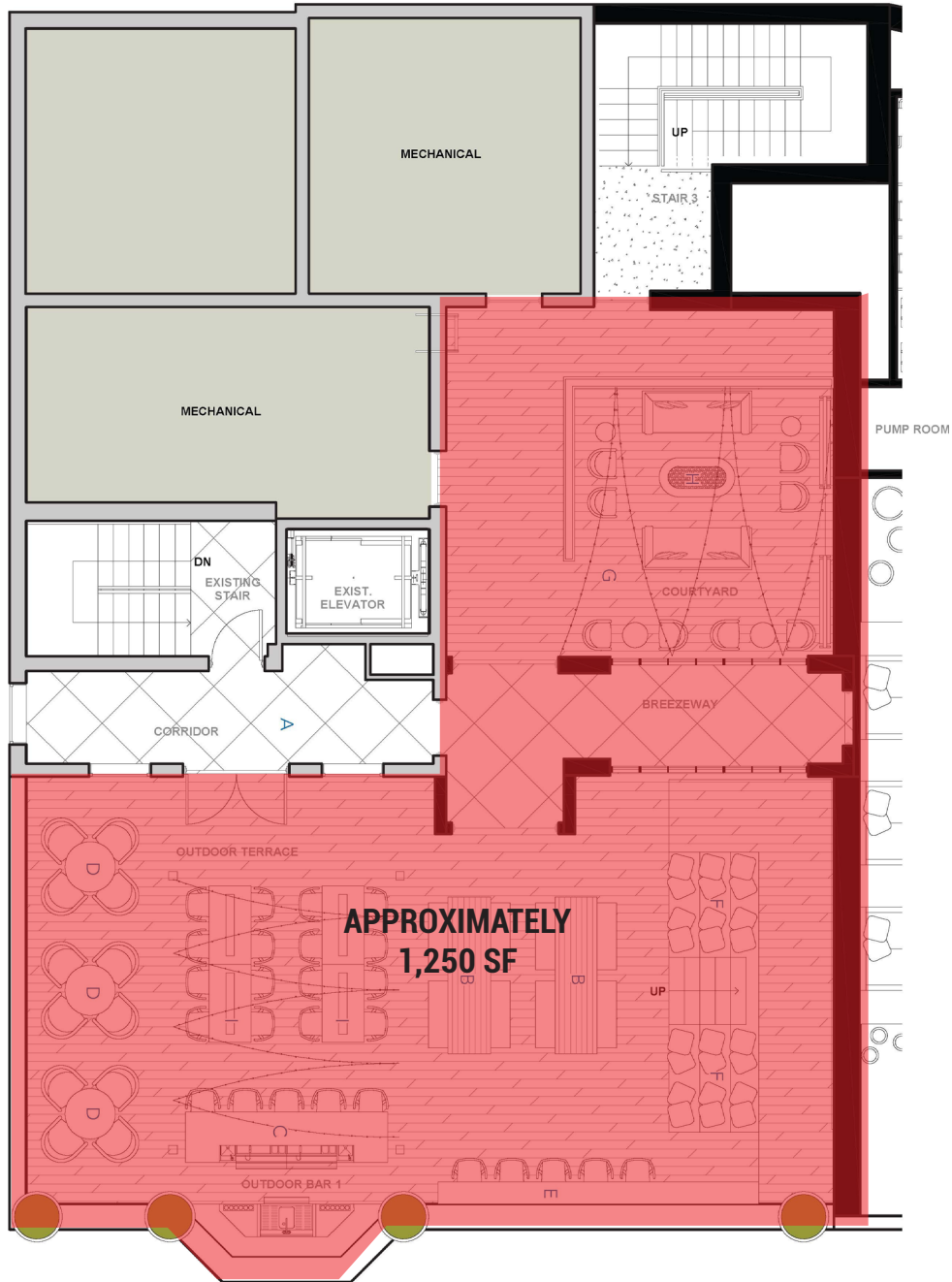
EXCLUSIVE AGENTS

William Winter 312/878-9445  
wwinter@stonerealestate.com

STONE  
REAL ESTATE



ROOF DECK



N. CLARK



EXCLUSIVE AGENTS

William Winter 312/878-9445  
wwinter@stonerealestate.com

STONE  
REAL ESTATE