

801 W. Madison  
West Loop, Chicago, IL



STONE  
REAL ESTATE

# THE NEIGHBORHOOD HOTEL® | 801 W. MADISON



## West Loop Meets Fulton Market at the Iconic Intersection of Halsted & Madison



### PROPERTY DESCRIPTION

Located at the heavily trafficked intersection of Halsted & Madison, 801 W. Madison presents this flagship opportunity at the gateway to the West Loop. The retail sits at the base of a new extended stay boutique hotel, is surrounded by the West Loop's dense residential population and Fulton Market's robust office market and enjoys 7 days-a-week traffic. Historic architecture at a stoplight corner intersection in one of the country's most talked about neighborhoods awaits your arrival.

### SPACE DETAILS

- Ground Floor Ceiling Height: 25'
- Ground Floor: 11,960 sf
- Lower Level: 8,779 sf



**130'**

Frontage onto Halsted



**86'**

Frontage on Madison



**151K**

People in a 1.5 mile radius



**592K**

Daytime population in a 1.5 mile radius



**34K**

Vehicles per day at the intersection



**\$193K**

Average HH income in a half mile radius

### AREA RETAILERS & ATTRACTIONS



#### EXCLUSIVE AGENTS

**John Vance** 312/782-1373  
jvance@stonerealestate.com

**Noah O'Neill** 312/245-5206  
noah@stonerealestate.com

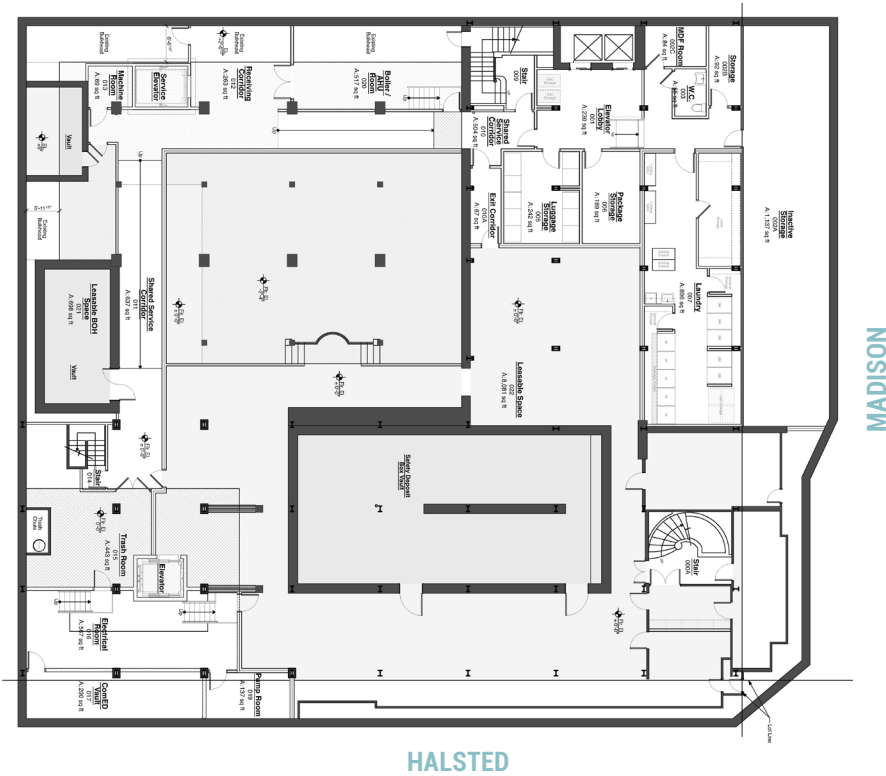
**William Winter** 312/878-9445  
wwinter@stonerealestate.com

**STONE**  
REAL ESTATE

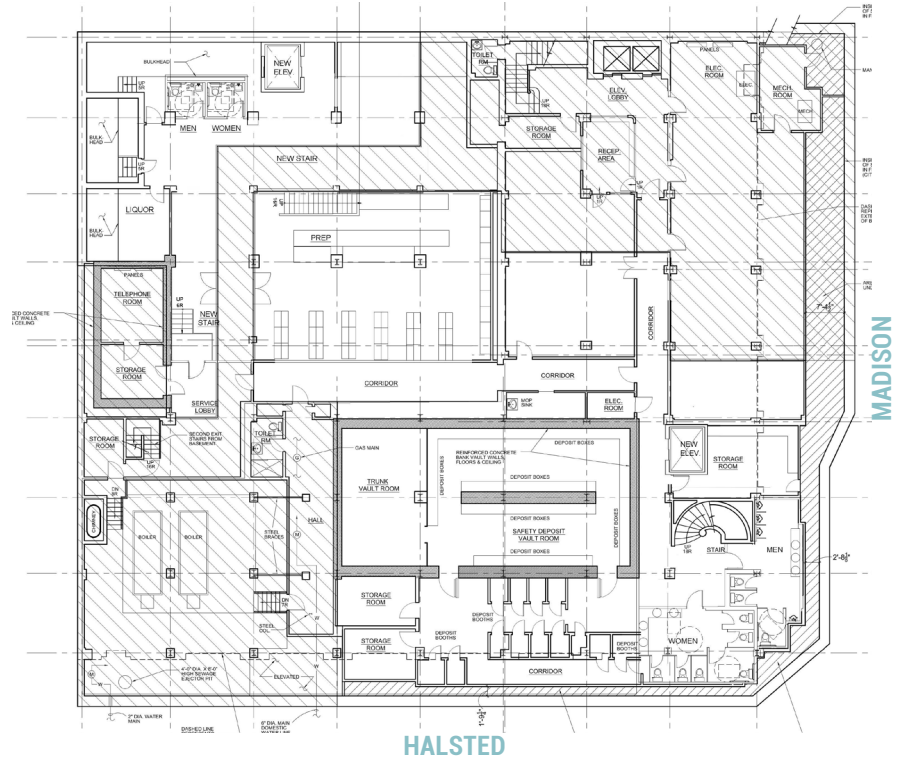


## LOWER LEVEL

**EXISTING CONDITIONS LAYOUT**



**FULL SERVICE RESTAURANT LAYOUT**



EXCLUSIVE AGENTS

**John Vance** 312/782-1373  
jvance@stonerealestate.com

**Noah O'Neill** 312/245-5206  
noah@stonerealestate.com

**William Winter** 312/878-9445  
wwinter@stonerealestate.com

STONE REAL ESTATE

# THE NEIGHBORHOOD HOTEL® | 801 W. MADISON

## INTERIOR PHOTOS



EXCLUSIVE AGENTS

**John Vance** 312/782-1373  
jvance@stonerealestate.com

**Noah O'Neill** 312/245-5206  
noah@stonerealestate.com

**William Winter** 312/878-9445  
wwinter@stonerealestate.com

**STONE**  
REAL ESTATE