



Ravenswood Medical Center

1945 W Wilson, Chicago IL



Best In Class Medical Space

Customized build outs available.

Superior Location

Ideal for North Side medical presence.

Easily Accessible

Close proximity to CTA, Metra, & Major Arterial Roads.

Abundance of On Site Parking

Unique for the area and allows for easy patient/visitor access.

Strong Demographics

Dense, family friendly urban location.



Superior Location



Strong Demographics



Abundance of On Site Parking



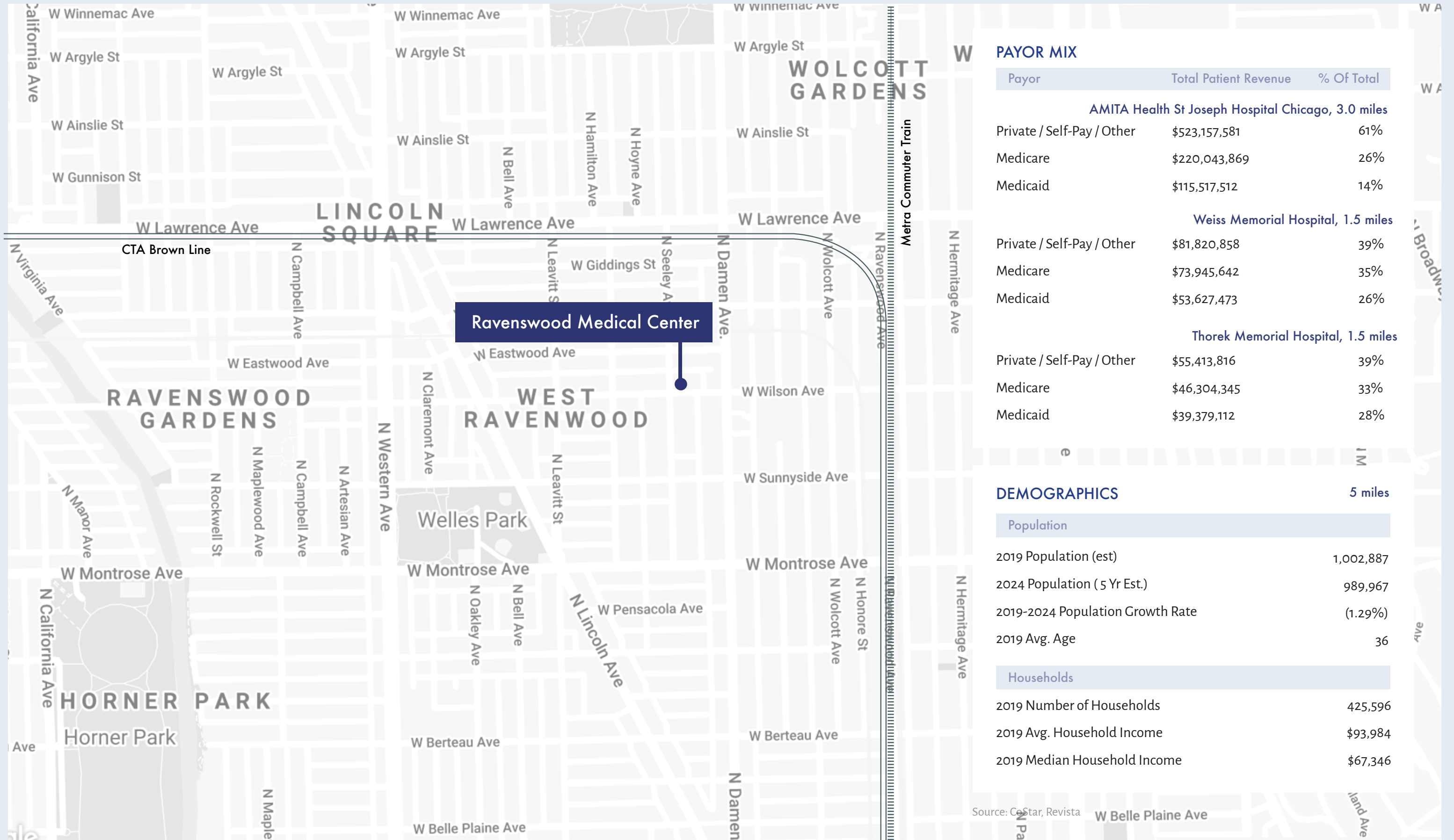


Ravenswood Medical Center

Parking

Downtown Chicago





Ravenswood Medical Center

PAYOR MIX

Payor	Total Patient Revenue	% Of Total
AMITA Health St Joseph Hospital Chicago, 3.0 miles		
Private / Self-Pay / Other	\$523,157,581	61%
Medicare	\$220,043,869	26%
Medicaid	\$115,517,512	14%
Weiss Memorial Hospital, 1.5 miles		
Private / Self-Pay / Other	\$81,820,858	39%
Medicare	\$73,945,642	35%
Medicaid	\$53,627,473	26%
Thorek Memorial Hospital, 1.5 miles		
Private / Self-Pay / Other	\$55,413,816	39%
Medicare	\$46,304,345	33%
Medicaid	\$39,379,112	28%

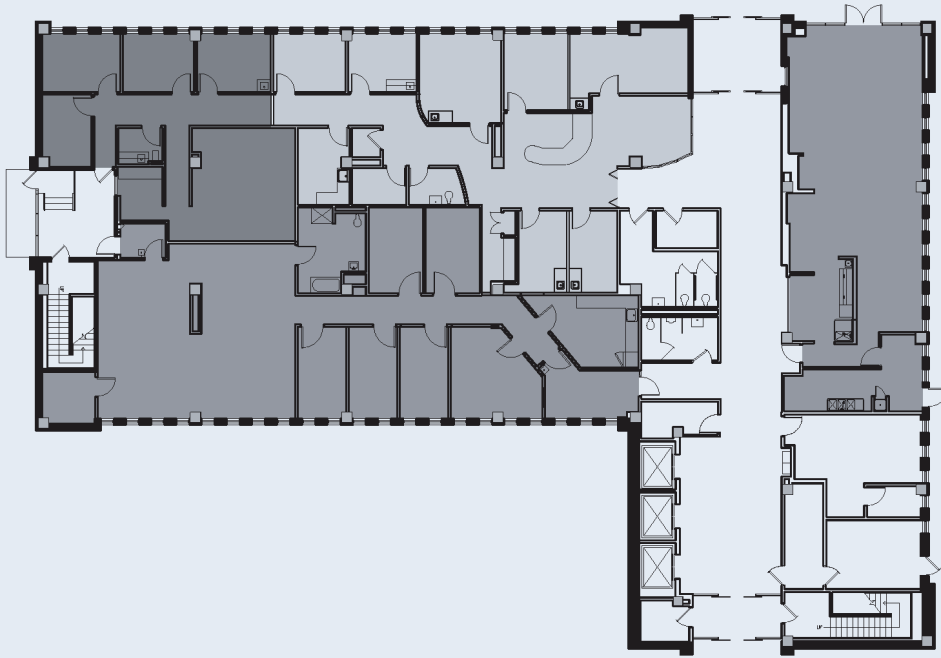
DEMOGRAPHICS

5 miles	
Population	
2019 Population (est)	1,002,887
2024 Population (5 Yr Est.)	989,967
2019-2024 Population Growth Rate	(1.29%)
2019 Avg. Age	36
Households	
2019 Number of Households	425,596
2019 Avg. Household Income	\$93,984
2019 Median Household Income	\$67,346

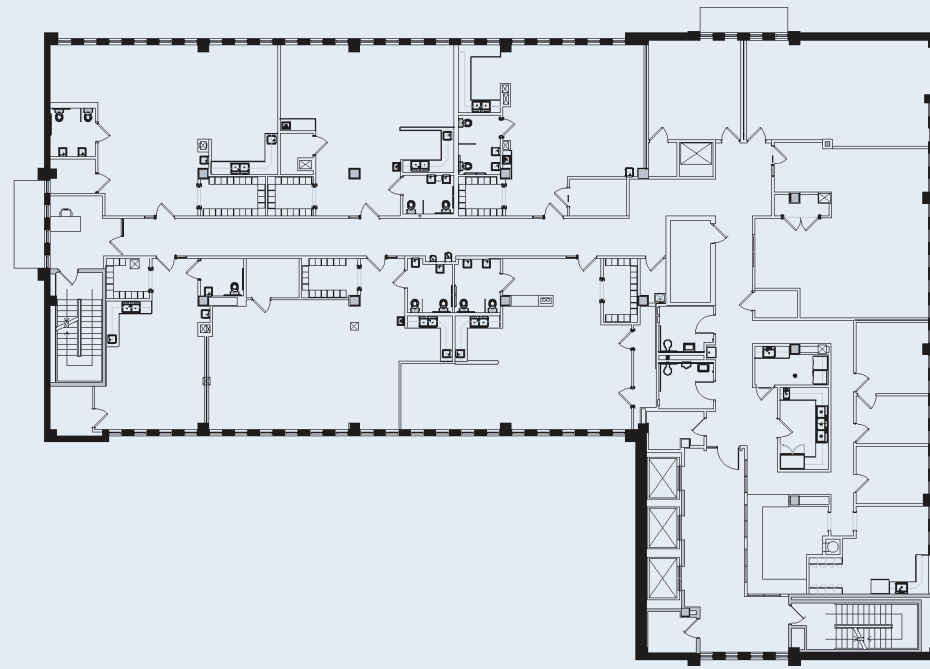
Source: CoStar, Revista

1ST FLOOR

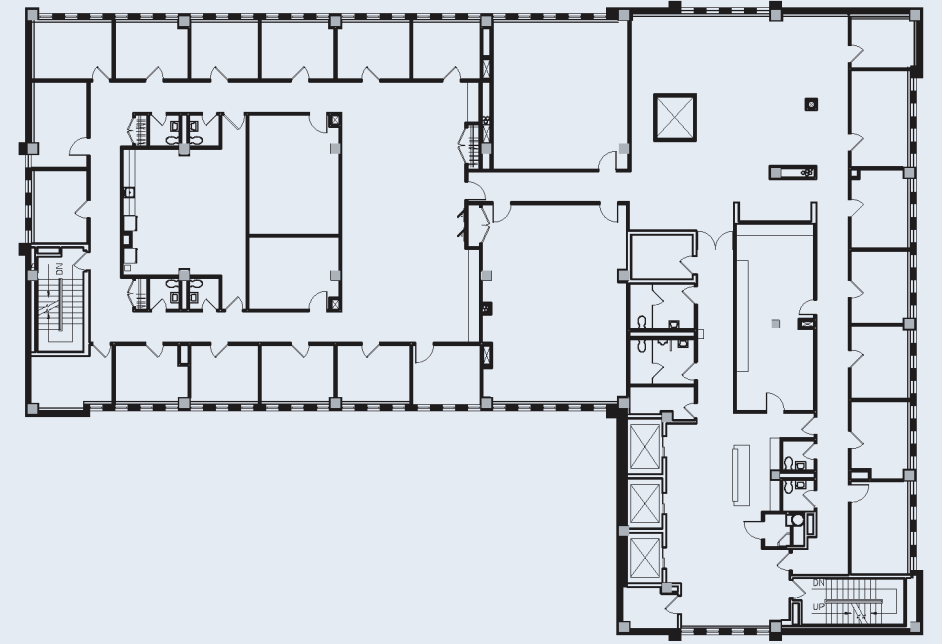
Suite 175:
1,449 RSF



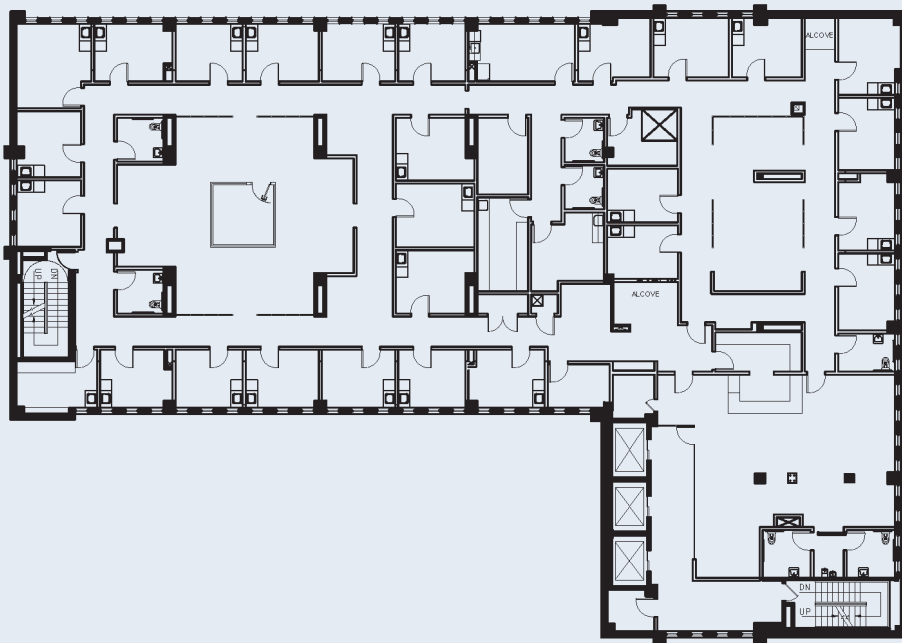
2ND FLOOR



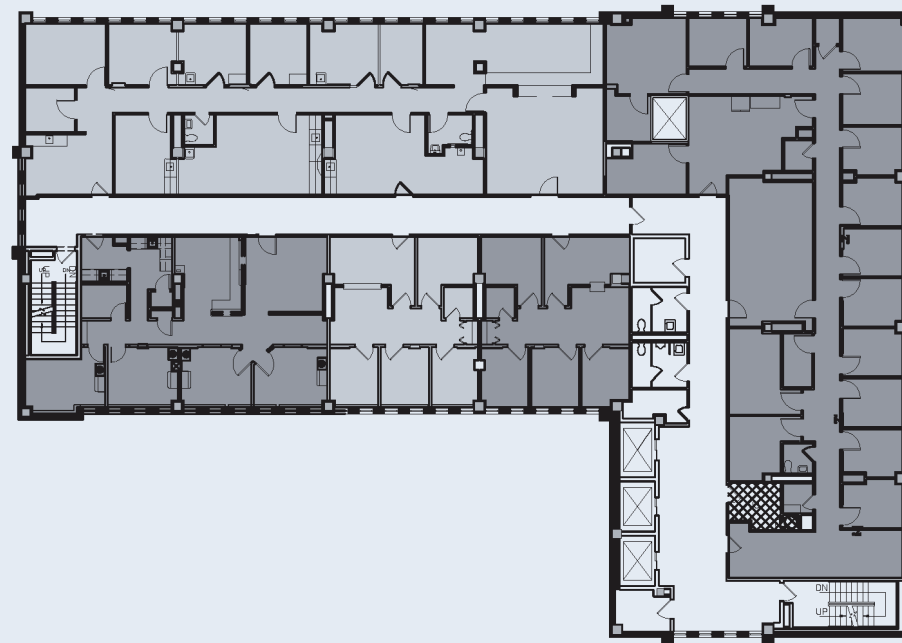
3RD FLOOR



4TH FLOOR



5TH FLOOR



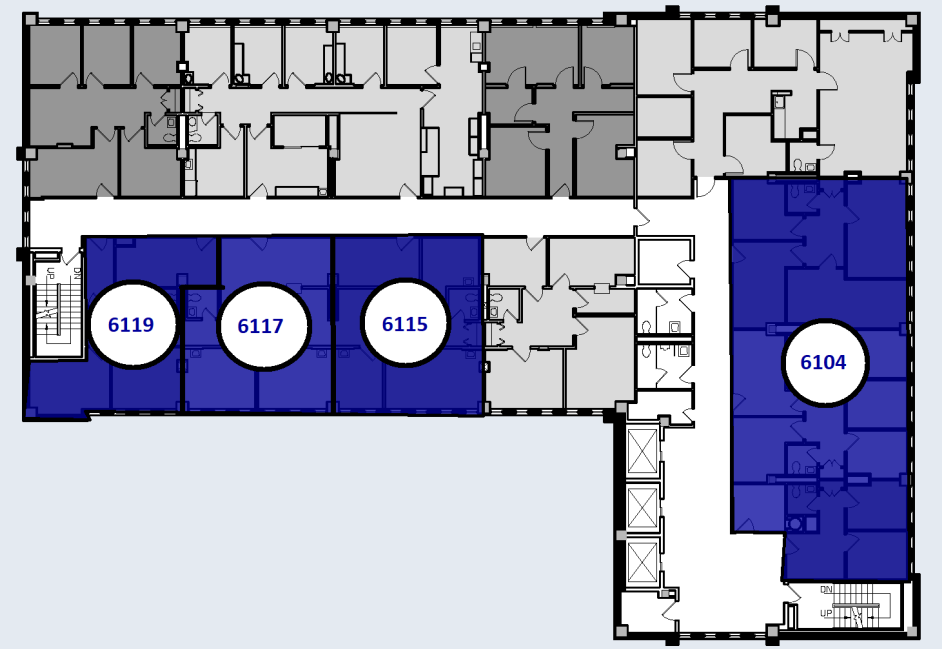
6TH FLOOR

Suite 6119: 639 RSF

Suite 6115: 925 RSF

Suite 6117: 846 RSF

Suite 6104: ~2,300 RSF





Ravenswood Medical Center

1945 W Wilson, Chicago IL

Contacts

Noah O'Neill

Principal, Stone Real Estate

noah@stonerealestate.com

O: 312-245-5206

