

STONE REAL ESTATE

CHATHAM RIDGE SHOPPING CENTER



1.7-13.8K

Square feet available



222.1K

Daytime population in a three mile radius



\$56.2K

Average HH income in a three mile radius



254.4K

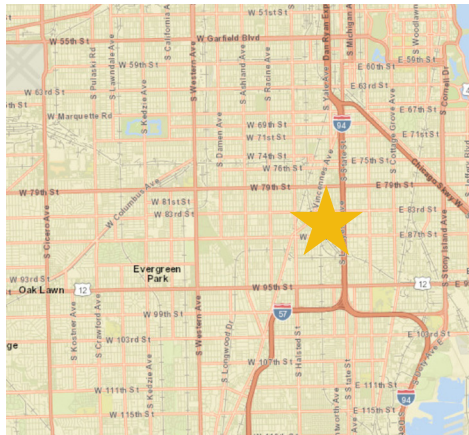
People in a three mile radius



250K

Vehicles per day

Junior Box, End Cap, and 2nd Gen Restaurant Spaces Available



PROPERTY DESCRIPTION

- Join Five Below (July Opening), new tenant Biolife (now open) and recently expanded Foot Locker (doubled in size).
- Dominant retail trade area with infill demographic profile;
- Anchored by top performing Food 4 Less grocery store (Kroger);
- Incredible visibility being adjacent to the Dan Ryan Expressway (I-94) and CTA Red Line Stop (87th);
- Convenient access from three stoplight intersections;
- Surrounded by prominent retailers providing a strong draw of customers from the surrounding communities.

SPACE NOTES

- Junior box now available between Five Below and Foot Locker;
- Attractive and highly visible position at main entrance drive aisle;
- Recently remodeled QSR space in outlet fronting 87th;
- New outlet end cap available.

AVAILABLE SPACE

- 13,847 sq (junior box)
- 1,800 sq (outlot end cap)
- 1,740 sq (2nd Gen restaurant in outlet)
- 2,605 sq (Raising Canes)
- 12,329 sq (Five Below)
- 11,783 sq (Biolife)
- 1,200 sq (Goblin Bat)

LEASED

EXCLUSIVE AGENT

Noah O'Neill 312/245-5206
noah@stonerealestate.com

STONE

REAL ESTATE

This information is from sources we deem to be reliable, however nothing contained herein should be construed as a representation on our part, as no independent verification of the information has been made by us.



CHATHAM RIDGE SHOPPING CENTER



TENANT	Unit	Square Feet
Raising Canes (Coming Soon)	1	2,605
Grand Chinese Kitchen	2	1,200
Subway	3	1,200
Firehouse Steak & Lemonade	4	1,200
Nashville Hot Chicken	5	1,740
Insure One	6	900
Docks	7	848
Goblin Bat (Coming Soon)	8	1,200
Verizon Wireless	9	1,200
Wing Stop	10	1,200
AVAILABLE	11	1,740
AVAILABLE	12	1,800
Starbucks	13	1,780
Dollar Tree	14	8,646
Food 4 Less	16	63,743

TENANT	Unit	Square Feet
Five Below (July Opening)	17A	12,329
AVAILABLE	17B	13,847
Foot Locker (Recently Expanded)	18	13,907
DTLR	21	6,045
City Sports	23	6,000
Biolife (Now Open)	24	11,783
US Renal Care	28	12,096
O'Reilly Auto Parts	29	7,500
Classic Nails	30	1,500
TOTAL		175,991

EXCLUSIVE AGENT

Noah O'Neill 312/245-5206
noah@stonerealestate.com

STONE
REAL ESTATE

STONE REAL ESTATE

CHATHAM RIDGE SHOPPING CENTER

NEWLY REMODELED & EXPANDED FOOT LOCKER



FIVE BELOW OPENING IN JULY



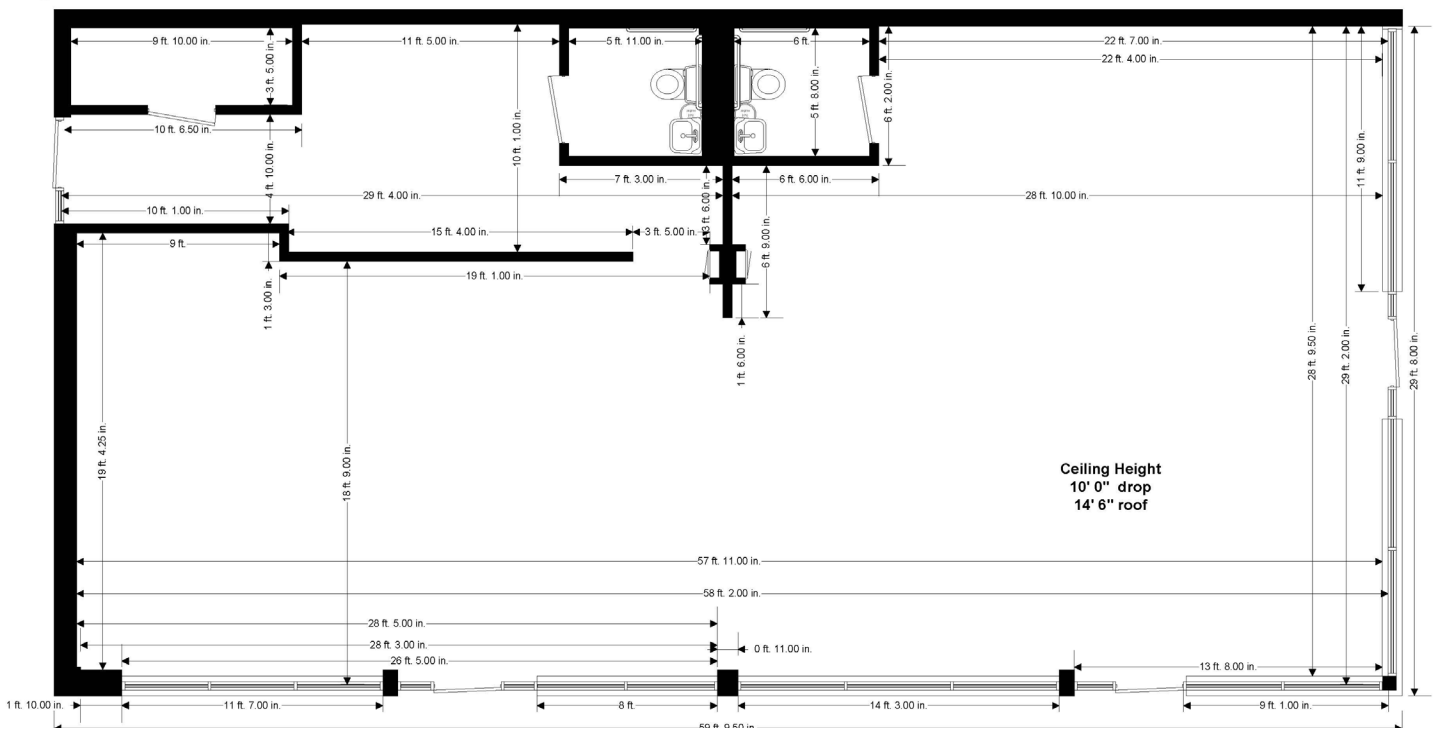
EXCLUSIVE AGENT

Noah O'Neill 312/245-5206
noah@stonerealestate.com

STONE
REAL ESTATE

CHATHAM RIDGE SHOPPING CENTER

SPACE 12 FLOOR PLAN



EXCLUSIVE AGENT

Noah O'Neill 312/245-5206
noah@stonerealestate.com