

STONE REAL ESTATE

# ONE SOUTH DEARBORN



**3,745**

Square feet available



**115'**

Frontage on Madison

## Prominent Retail Space in Central Loop



### PROPERTY

Built in 2005, this 40 story, 828,000 sf office tower sits at the SEC of Dearborn and Madison. Located within a block of Chicago's famous State & Madison intersection, once known as the busiest corner in America, One S. Dearborn pulls a broad base of customers to its doors.

### AVAILABLE SPACE

3,745 square feet



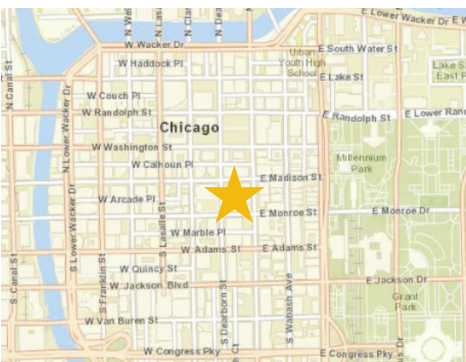
**70.3K**

Office population in a two block radius



**\$149K**

Avg HH Income in a two block radius



### AREA RETAIL TENANTS



### AREA OFFICE TENANTS

- Sidley Austin
- JPMorgan Chase Bank
- Trustwave Holdings
- Oak Street Health
- ActiveCampaign
- Screenshot
- Chicago Public Schools
- Convenc



**11.4K**

Vehicles per day on Madison Street

### EXCLUSIVE AGENTS

**Eric Kamen** 312/782-1375  
ekamen@stonerealestate.com

**John Vance** 312/782-1373  
jvance@stonerealestate.com

### MANAGED BY

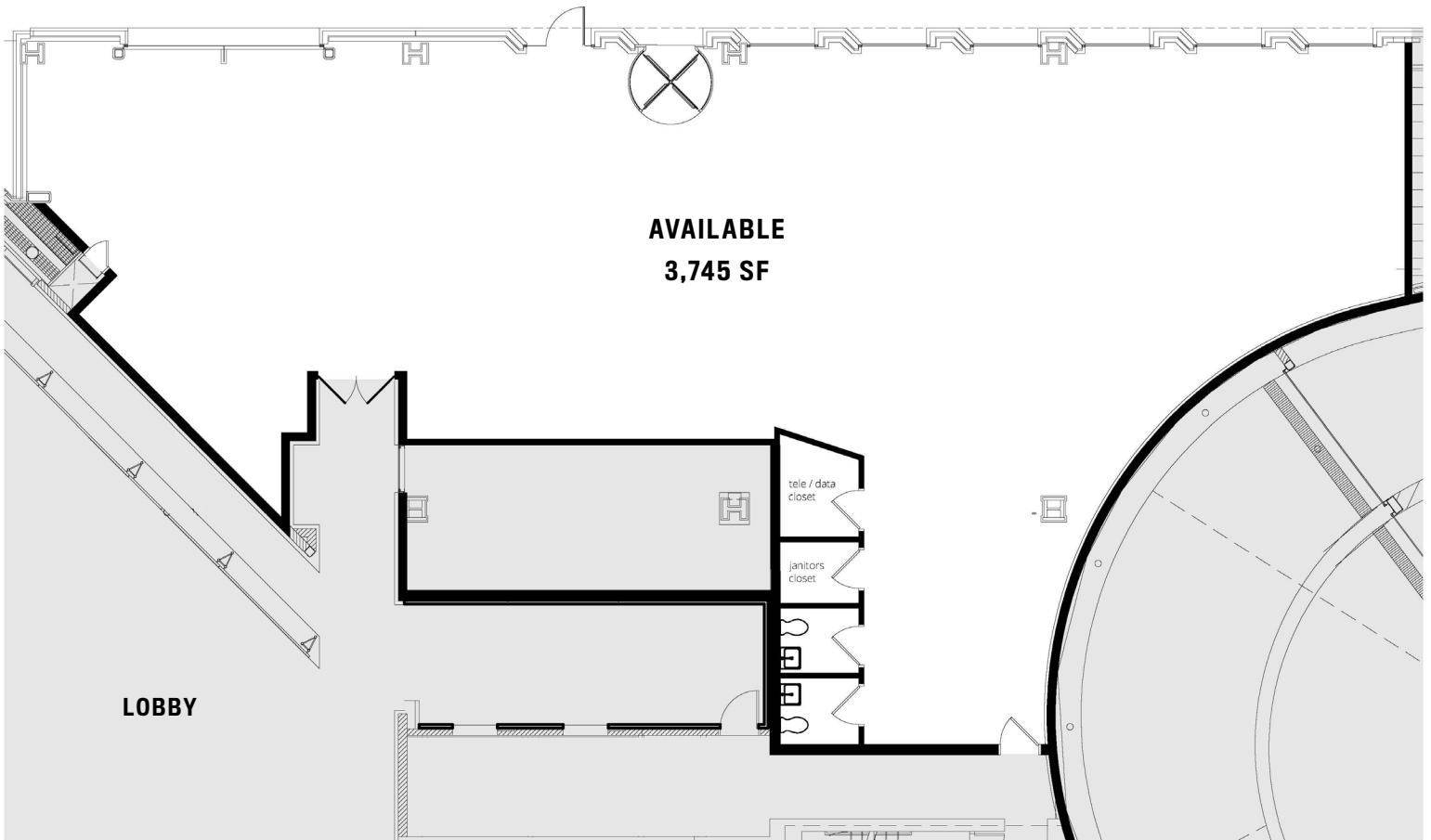
Hines

**STONE**  
REAL ESTATE

STONE REAL ESTATE  
**ONE SOUTH DEARBORN**

FLOOR PLAN

W. MADISON STREET



EXCLUSIVE AGENTS

**Eric Kamen** 312/782-1375  
ekamen@stonerealestate.com

**John Vance** 312/782-1373  
jvance@stonerealestate.com

MANAGED BY

Hines

**STONE**  
REAL ESTATE