

500 WEST MONROE



2,363
Square feet
Available



45'
Frontage on
Canal



32K

Daytime population in
2-block radius



Prominent Small Space Opportunity

PROPERTY

- Class A office building measuring 973,000 rsf;
- Situated in the West Loop between Union Station & Ogilvie Station;
- New retail signage currently being proposed;
- Anchor tenants are GE Capital and Motorola Solutions.

AVAILABLE SPACE

- 2,363 sf (45' of frontage on Canal on the morning side of the street);
- Direct access to street and to building's lobby.

SURROUNDING AREA OFFICE TENANTS

GE Capital, Motorola, AIG, Katten Muchin, LinkedIn, CDW, Gogo, Pepsi Co., Citigroup, Zurich American Insurance, Orbitz and Fifth Third.

AREA RETAILERS



\$136K
Avg HH Income in a
one-mile radius



22K

Vehicles per day at
the intersection



New signage
proposed



EXCLUSIVE AGENTS

Eric Kamen 312/782-1375
ekamen@stonerealestate.com

John Vance 312/782-1373
jvance@stonerealestate.com

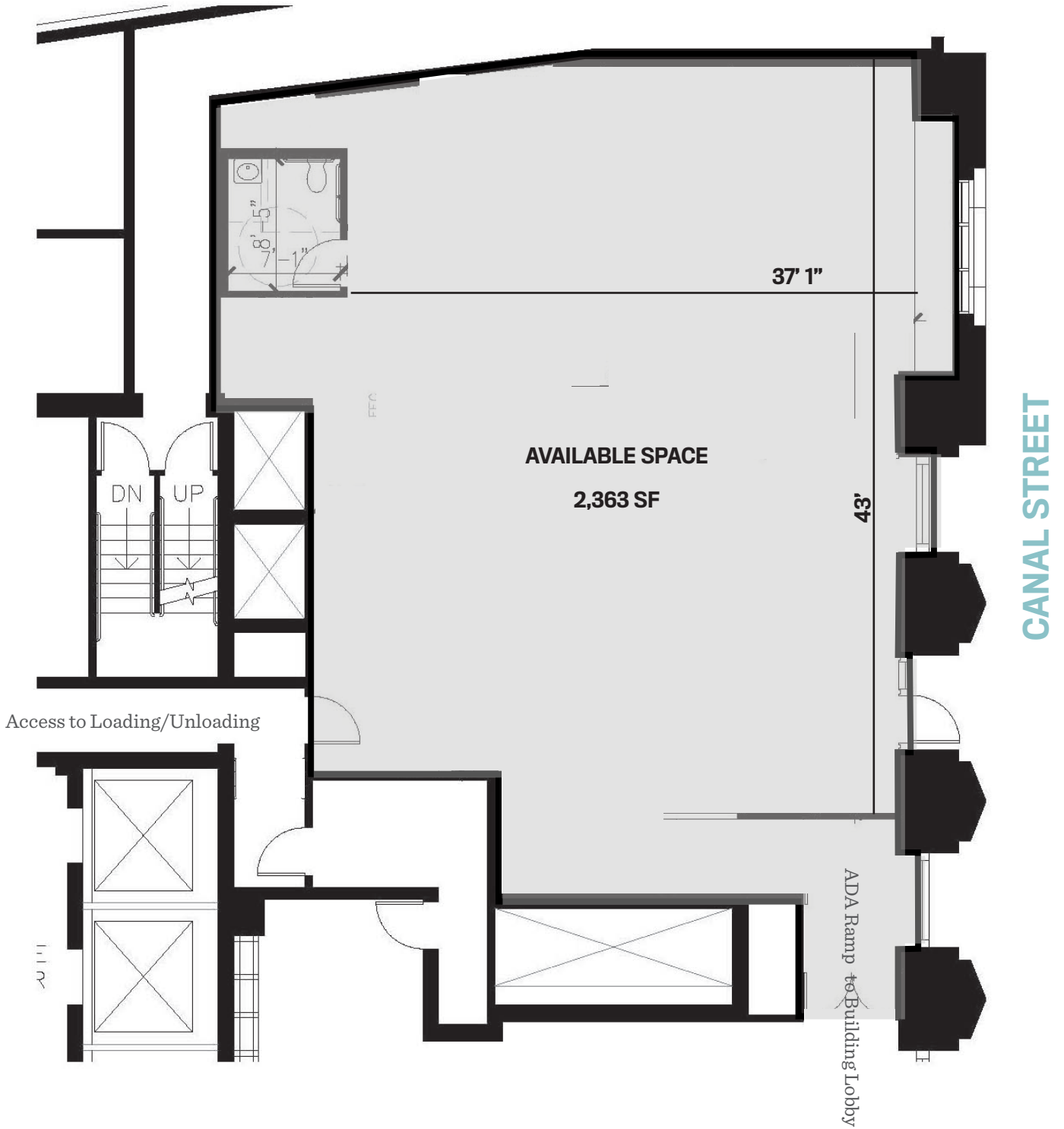
OWNED BY

Spear Street Capital

STONE
REAL ESTATE

STONE REAL ESTATE

500 WEST MONROE



EXCLUSIVE AGENTS

Eric Kamen 312/782-1375
ekamen@stonerealestate.com

John Vance 312/782-1373
jvance@stonerealestate.com

OWNED BY

Spear Street Capital

STONE
REAL ESTATE

STONE REAL ESTATE

500 WEST MONROE



EXCLUSIVE AGENTS

Eric Kamen 312/782-1375
ekamen@stonerealestate.com

John Vance 312/782-1373
jvance@stonerealestate.com

OWNED BY

Spear Street Capital

STONE
REAL ESTATE