

# 500 WEST MONROE



**2,363**  
Square feet  
Available



**45'**  
Frontage on  
Canal



**32K**  
Daytime population in  
2-block radius



## Prominent Small Space Opportunity

### PROPERTY

- Class A office building measuring 973,000 rsf;
- Situated in the West Loop between Union Station & Ogilvie Station;
- New retail signage currently being proposed;
- Anchor tenants are GE Capital and Motorola Solutions.

### AVAILABLE SPACE

- 2,363 sf (45' of frontage on Canal on the morning side of the street);
- Direct access to street and to building's lobby.

### SURROUNDING AREA OFFICE TENANTS

GE Capital, Motorola, AIG, Katten Muchin, LinkedIn, CDW, Gogo, Pepsi Co., Citigroup, Zurich American Insurance, Orbitz and Fifth Third.

### AREA RETAILERS



**\$136K**  
Avg HH Income in a  
one-mile radius



**22K**  
Vehicles per day at  
the intersection



New signage  
proposed



#### EXCLUSIVE AGENTS

**Eric Kamen** 312/782-1375  
ekamen@stonerealestate.com

**John Vance** 312/782-1373  
jvance@stonerealestate.com

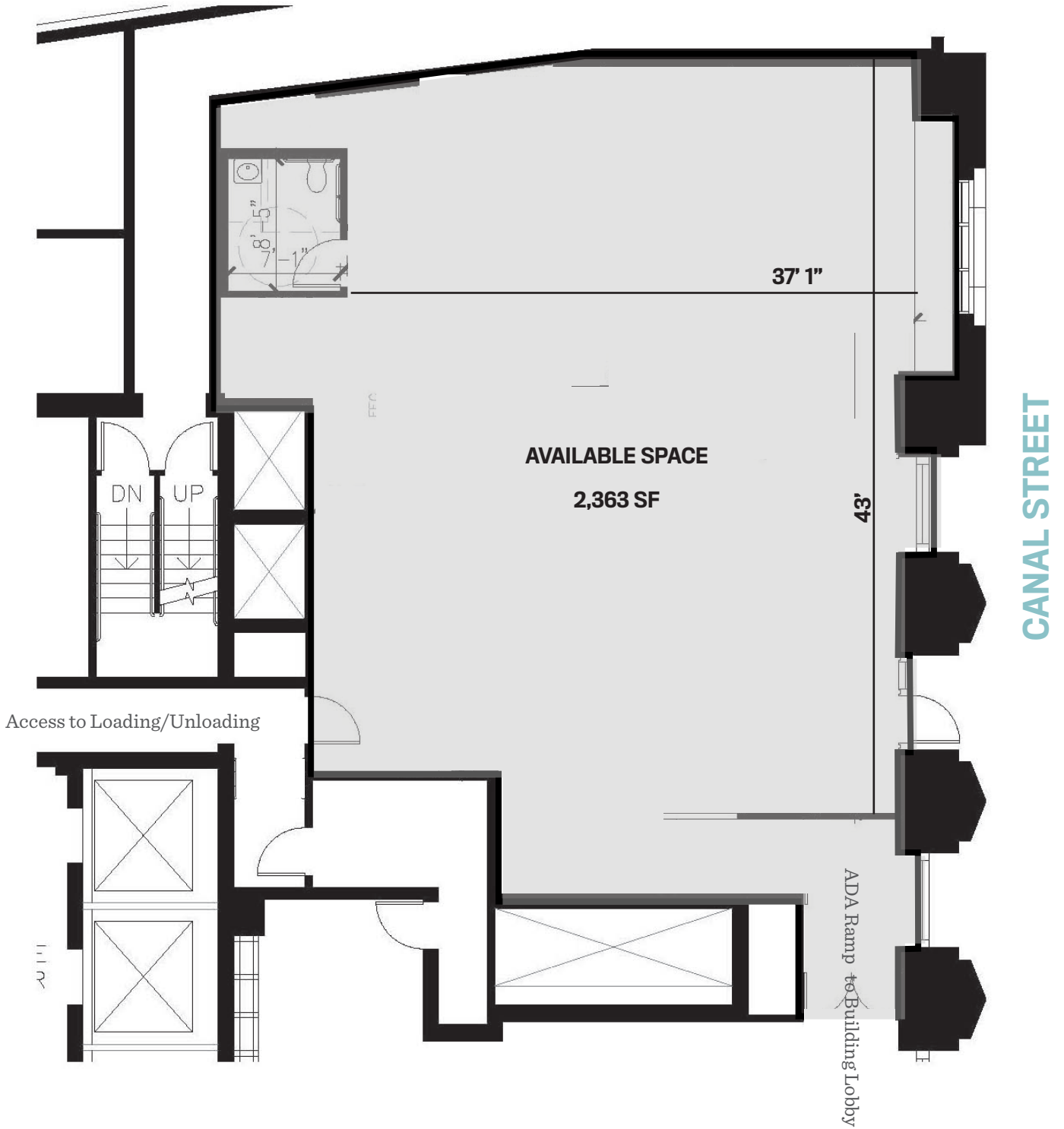
#### OWNED AND MANAGED BY

Piedmont Office  
Realty Trust

**STONE**  
REAL ESTATE

STONE REAL ESTATE

# 500 WEST MONROE



EXCLUSIVE AGENTS

**Eric Kamen** 312/782-1375  
ekamen@stonerealestate.com

**John Vance** 312/782-1373  
jvance@stonerealestate.com

OWNED AND MANAGED BY

Piedmont Office  
Realty Trust

**STONE**  
REAL ESTATE

STONE REAL ESTATE

# 500 WEST MONROE



EXCLUSIVE AGENTS

**Eric Kamen** 312/782-1375  
ekamen@stonerealestate.com

**John Vance** 312/782-1373  
jvance@stonerealestate.com

OWNED AND MANAGED BY

Piedmont Office  
Realty Trust

**STONE**  
REAL ESTATE