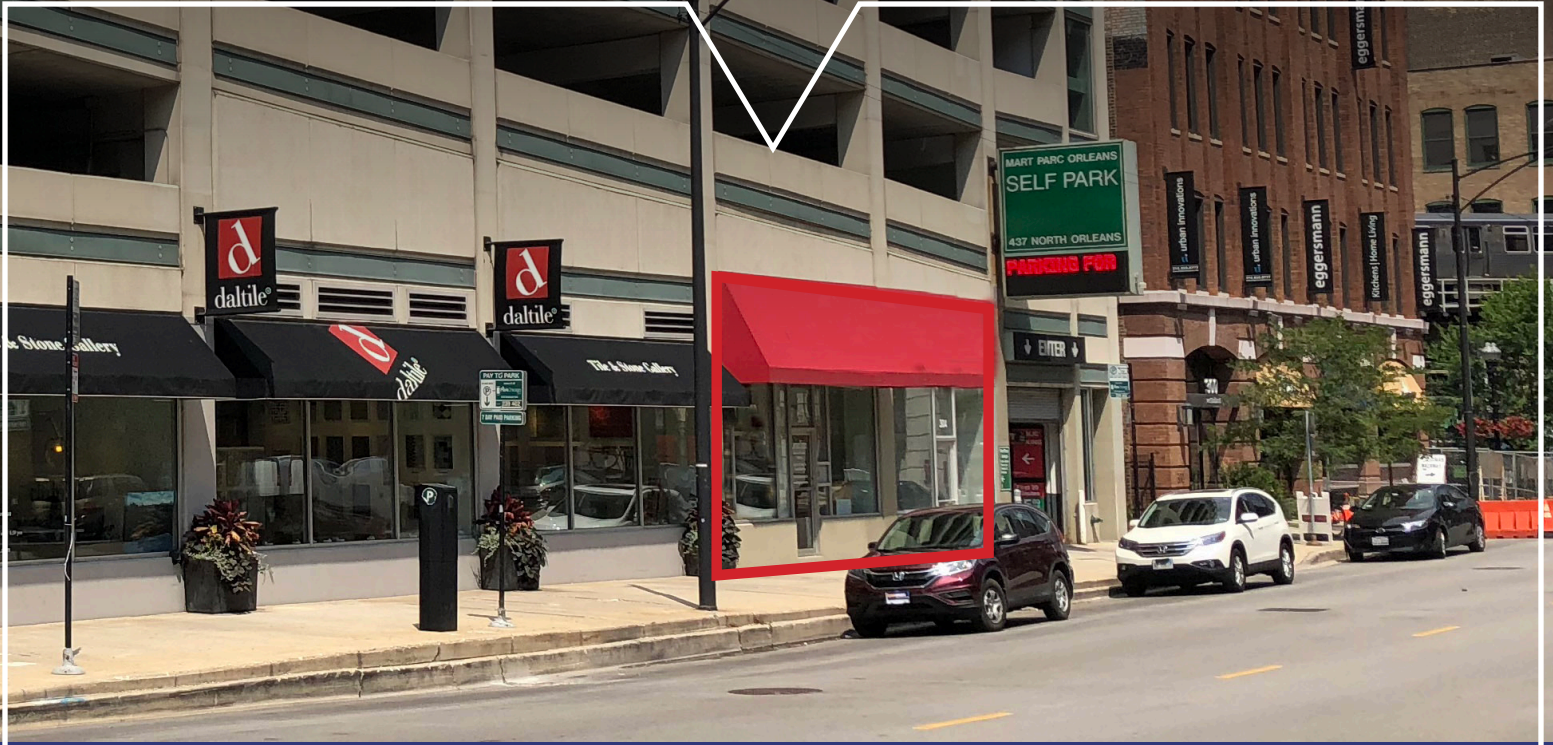


THE
MART
A VORNADO PROPERTY

431 N. ORLEANS



2,055 SF AVAILABLE

RIVER NORTH SPACE BETWEEN EAST BANK CLUB & THE MART

Prime location at Hubbard & Wells in the Design District portion of River North

Adjacent to Daltile and Kohler Signature Store

Co-tenancy includes THE MART's LuxeHome, Studio 41 Home Design, Roche Bobois, Ligne Roset, Cosentino and Poliform

Building located between the East Bank Club and THE MART, the world's largest commercial building and design center

JOHN VANCE
312.782.1373

jvance@stonerealestate.com

STONE
REAL ESTATE

DAVID STONE
312.372.2657

dstone@stonerealestate.com

431 N. ORLEANS



108K

Population in one mile radius



70K

Households in a one mile radius



\$173K

Average income in one mile radius

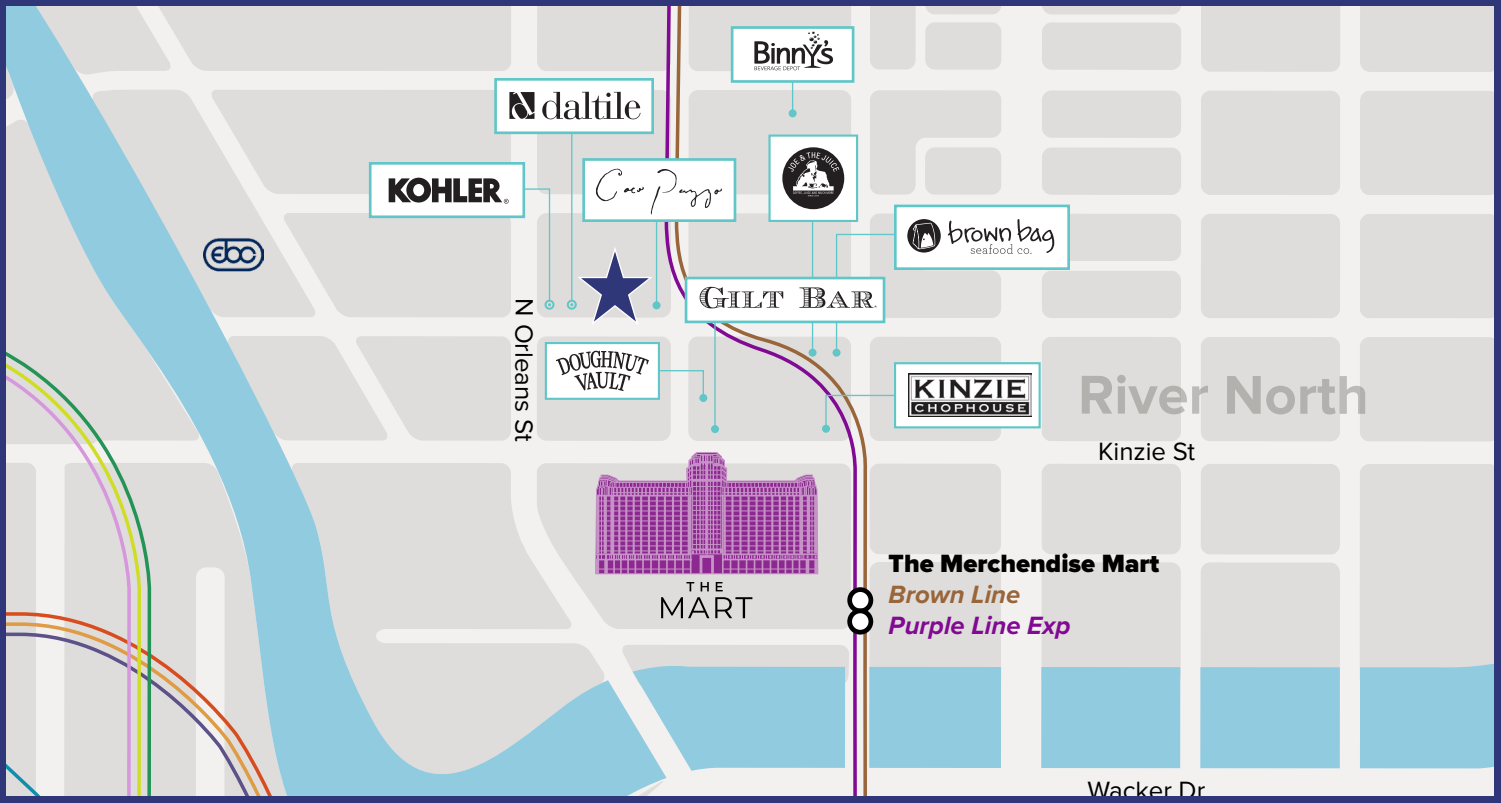


20.3K

Vehicles per day at Orleans & Hubbard

DEMOGRAPHICS

	1 MILE	2 MILE	3 MILE
POPULATION	108,354	262,754	421,302
HOUSEHOLDS	70,097	156,409	234,042
AVERAGE HOUSEHOLD INCOME	\$173,758	\$174,216	\$172,426



JOHN VANCE

312.782.1373

jvance@stonerealestate.com

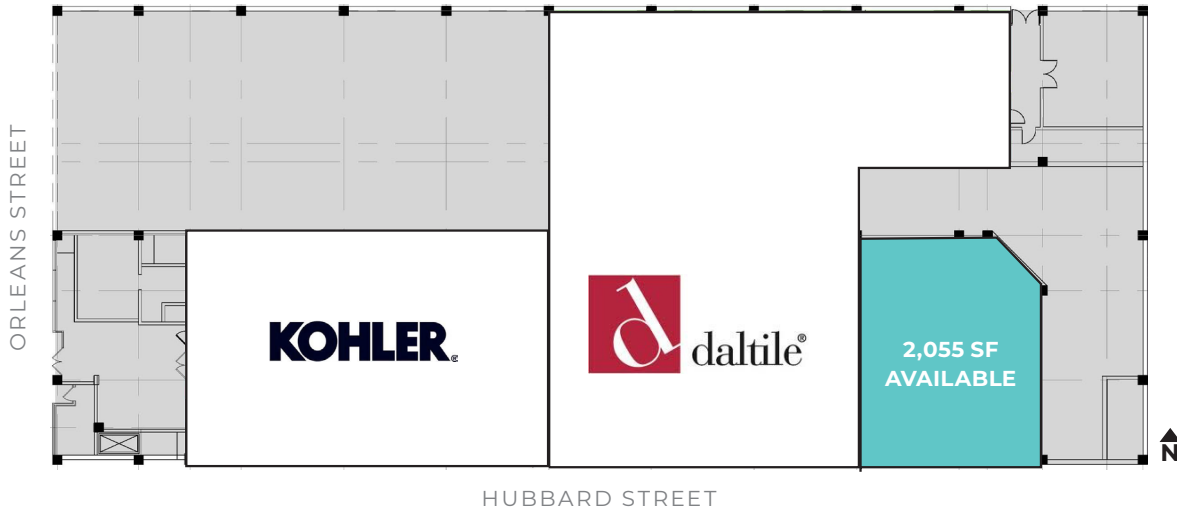
STONE
REAL ESTATE

DAVID STONE

312.372.2657

dstone@stonerealestate.com

431 N. ORLEANS



JOHN VANCE

312.782.1373

jvance@stonerealestate.com

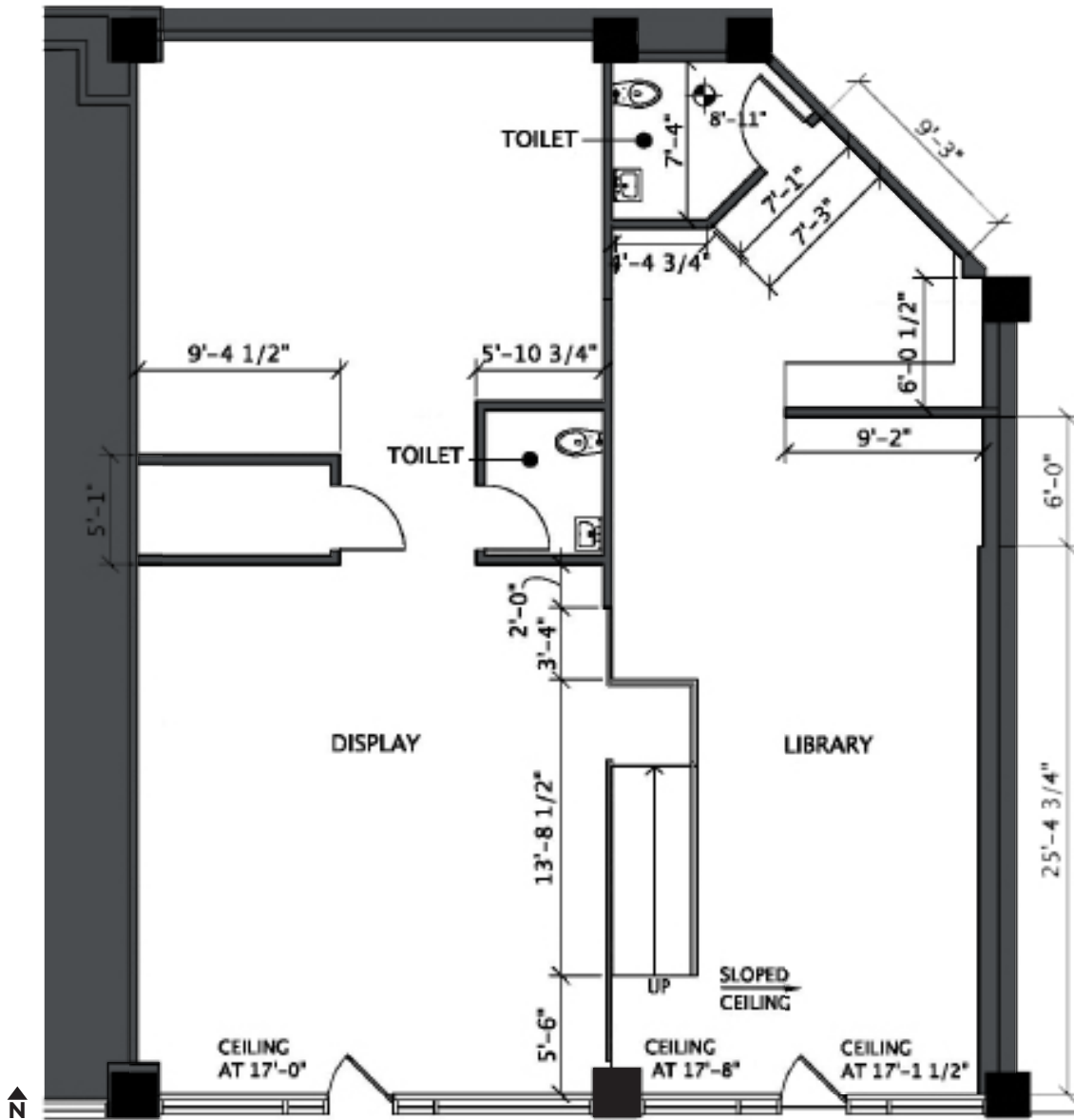
STONE
REAL ESTATE

DAVID STONE

312.372.2657

dstone@stonerealestate.com

431 N. ORLEANS



JOHN VANCE
312.782.1373
jvance@stonerealestate.com

STONE
REAL ESTATE

DAVID STONE
312.372.2657
dstone@stonerealestate.com