

STONE REAL ESTATE

# 1535 N. DAYTON



**4.5K**

Square feet available



**414K**

Daytime population in a two mile radius



**\$160K**

Average HH income in a two mile radius



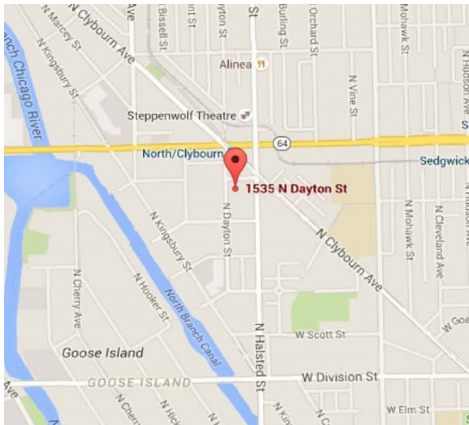
**149K**

Households in a two mile radius



**263K**

People in a two mile radius



## Desirable Lincoln Park Location - Brick & Timber Loft Space

### PROPERTY DESCRIPTION

- Exposed brick & timber loft office/ classroom space with high ceilings;
- Value opportunity - below market rent and full gross lease;
- Small boutique building;
- Steps from CTA Red Line and Clybourn Corridor retail;
- One (1) on site surface parking space included;
- Well maintained and attentive property management.

### AVAILABLE SPACE

- 4,500 sf (second floor)

### AREA RETAILERS



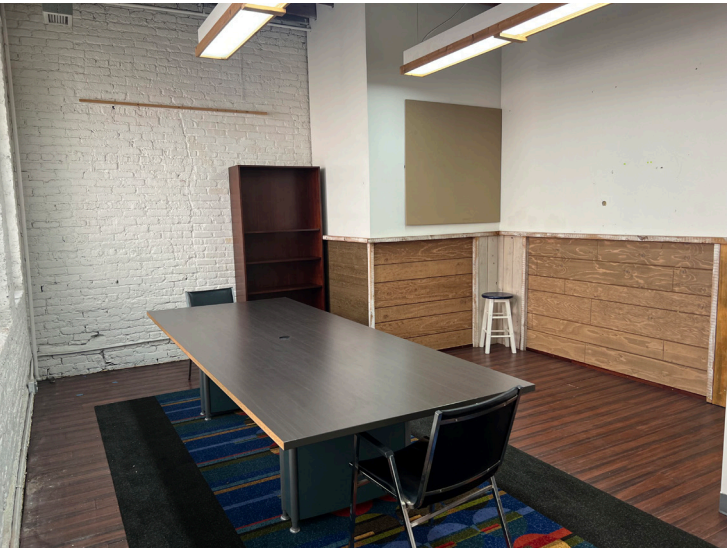
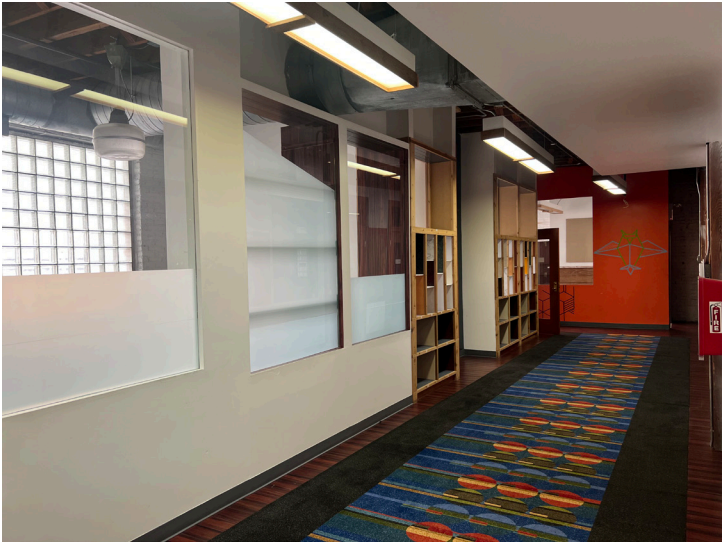
EXCLUSIVE AGENT

Noah O'Neill 312/245-5206  
noah@stonerealestate.com

**STONE**  
REAL ESTATE

STONE REAL ESTATE

# 1535 N. DAYTON



EXCLUSIVE AGENT

Noah O'Neill 312/245-5206  
noah@stonerealestate.com

STONE  
REAL ESTATE

# STONE REAL ESTATE

## 1535 N. DAYTON

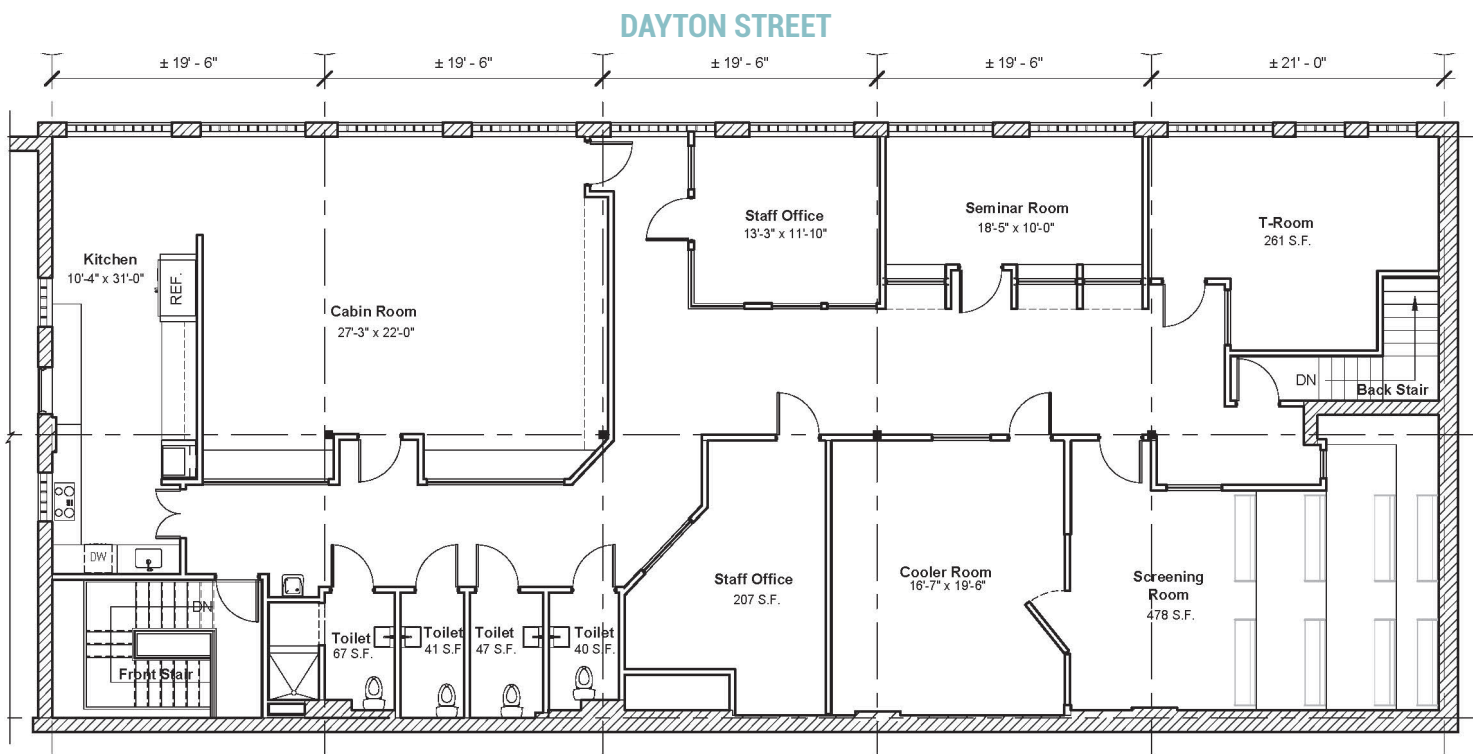


EXCLUSIVE AGENT

**Noah O'Neill** 312/245-5206  
noah@stonerealestate.com

**STONE**  
REAL ESTATE

SECOND FLOOR



EXCLUSIVE AGENT

Noah O'Neill 312/245-5206  
noah@stonerealestate.com

STONE  
REAL ESTATE